


VICTORIA

28 Shale Avenue • Greystone, Cochrane

 1393 sq ft

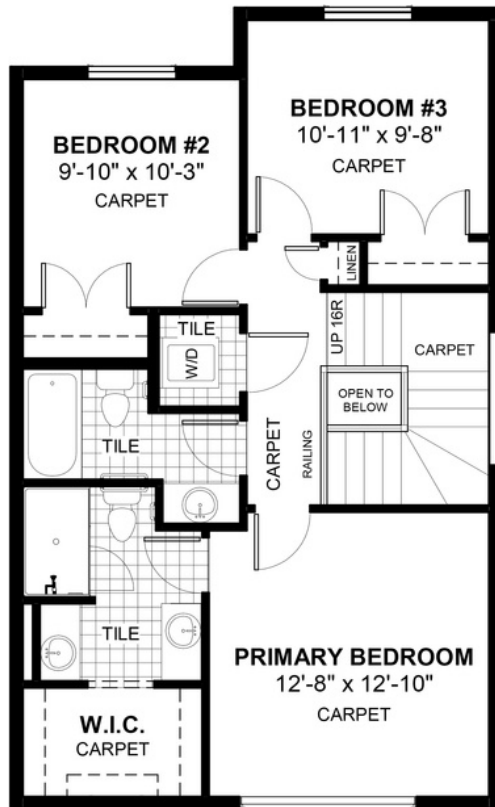
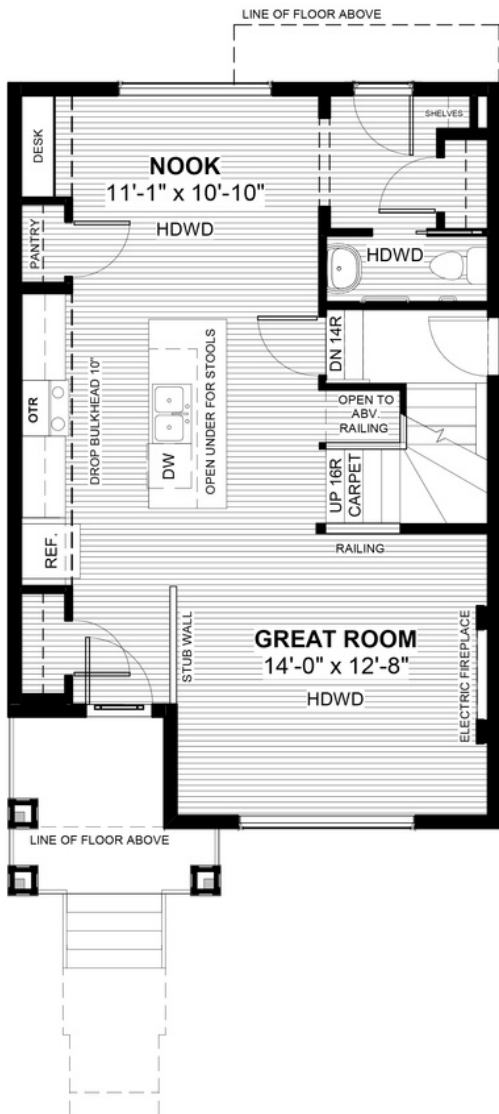
 3 bedrooms

 2.5 bathrooms



FEATURES

- ✓ Basement Side Entry
- ✓ Rear Parking Pad
- ✓ 9' Main Floor Ceiling
- ✓ Quartz Countertops
- ✓ Electric Fireplace
- ✓ Eng. Hardwood Floors
- ✓ Upper Floor Laundry
- ✓ Tile to Baths/Laundry
- ✓ Built-In Desk to Nook
- ✓ Double Vanities to Ensuite



NOTES



*Price includes lot&gst. Price, features & plan are subject to change at any time. All plans/designs are the exclusive property of Douglas Homes Ltd.