


# WATERTON

60 Mill Road • Greystone, Cochrane

 1698 sq ft

 3 bedrooms

 2.5 bathrooms

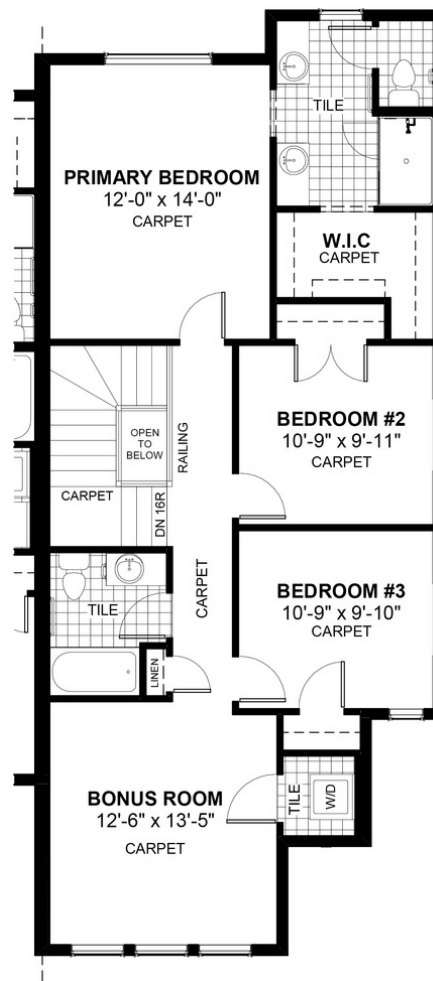


## FEATURES

- ✓ Duplex (Right Unit)
- ✓ 9' Main Floor Ceiling
- ✓ Quartz Countertops
- ✓ Electric Fireplace
- ✓ Upper Floor Bonus Room
- ✓ Eng. Hardwood Floors
- ✓ Wrought Iron Railings
- ✓ Upper Floor Laundry
- ✓ Double Vanities to Ensuite
- ✓ Built-In Bench to Entry



## NOTES



**DOUGLAS HOMES**  
— PERFECT FIT —

\*Price includes lot&gst. Price, features & plan are subject to change at any time. All plans/designs are the exclusive property of Douglas Homes Ltd.

[www.douglashomes.net](http://www.douglashomes.net) | [greystone@douglashomes.net](mailto:greystone@douglashomes.net) | 403.300.7787