

# PELICAN BAY

228 Langwell Common SE • Lanark Landing, Airdrie

 1,600 sq ft

 3 bedrooms

 2.5 bathrooms

## FEATURES

- ✓ Duplex (Left Unit)
- ✓ Basement Side Entry
- ✓ Upper Floor Loft
- ✓ Built-in Bench to Entry
- ✓ 9' Main Floor Ceiling
- ✓ Quartz Countertops
- ✓ Electric Fireplace
- ✓ Eng. Hardwood Main Floor
- ✓ Tile Baths/Laundry
- ✓ Double Vanities to Ensuite



## NOTES

---



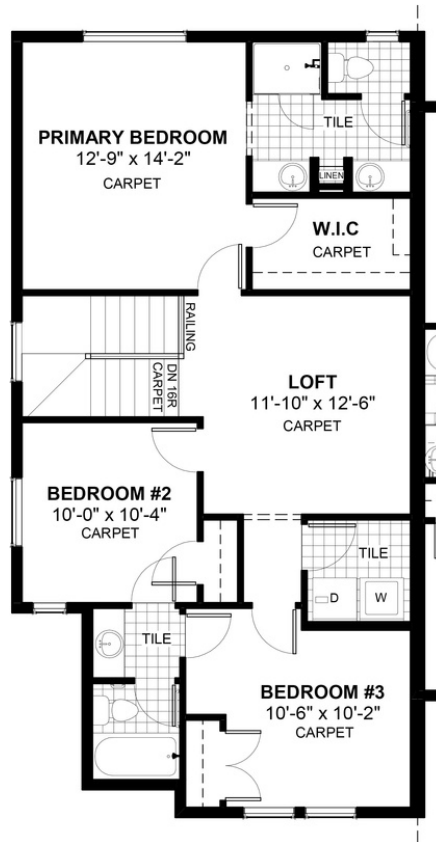
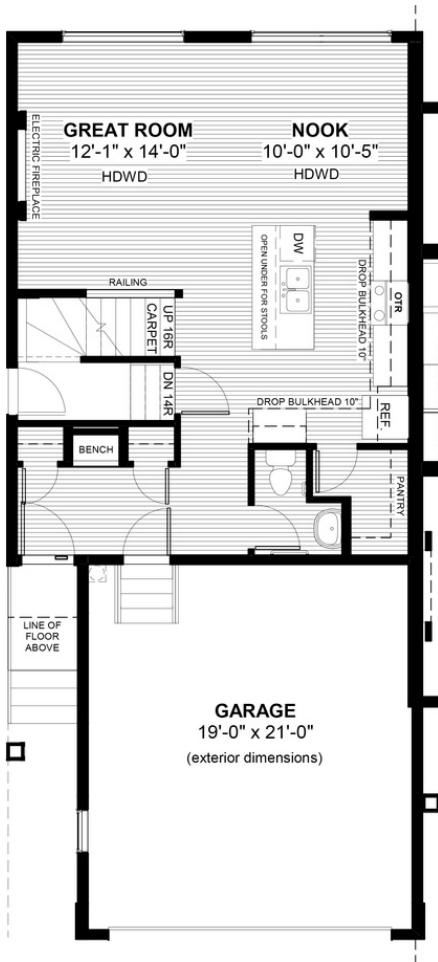
---



---



---



\*Price includes lot&gst. Price, features & plan are subject to change at any time. All plans/designs are the exclusive property of Douglas Homes Ltd.