

# FAIRMONT

48 Precedence View • Precedence, Cochrane



1602 sq ft



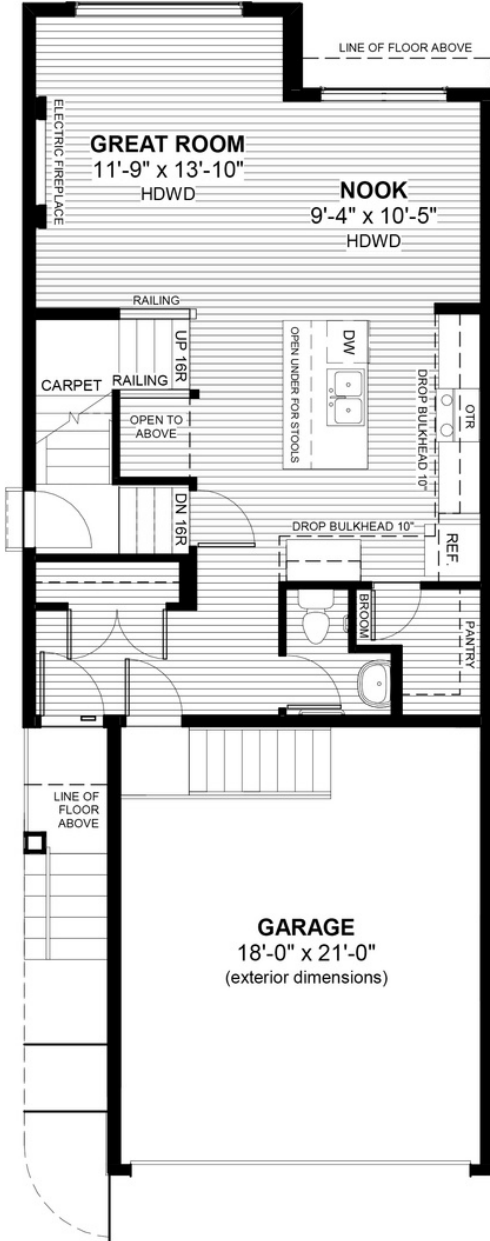
3 bedrooms



2.5 bathrooms



22'



## FEATURES

- ✓ Basement Side Entry
- ✓ 9' Main Floor Ceiling
- ✓ Upper Floor Loft
- ✓ Quartz Countertops
- ✓ Electric Fireplace
- ✓ Eng. Hardwood Main Floors
- ✓ Wrought Iron Railing
- ✓ Upper Floor Laundry
- ✓ Tile to Baths/Laundry
- ✓ Double Sinks to Ensuite



## NOTES

---



---



---



---



\*Price includes lot&gst. Price, features & plan are subject to change at any time. All plans/designs are the exclusive property of Douglas Homes Ltd.