

SILVERTON

236 Crimson Ridge Place NW • Crimson Ridge, Calgary



2016 sq ft



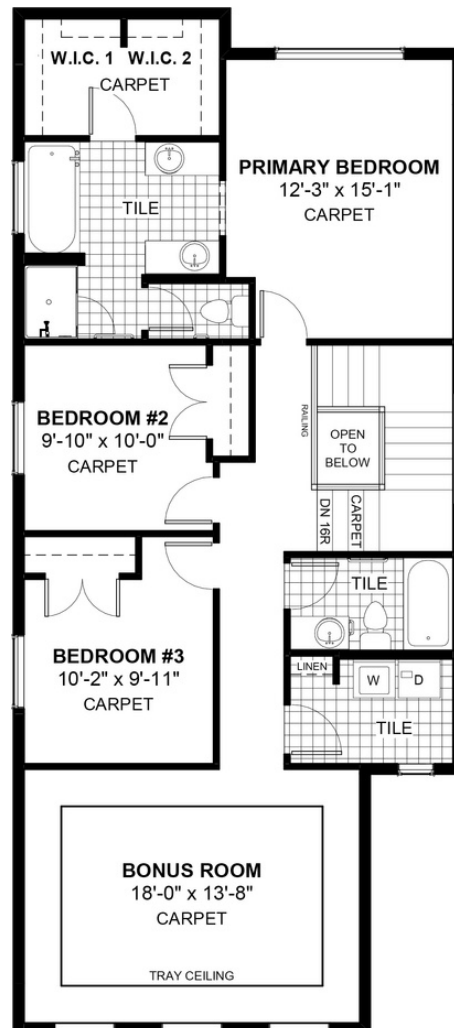
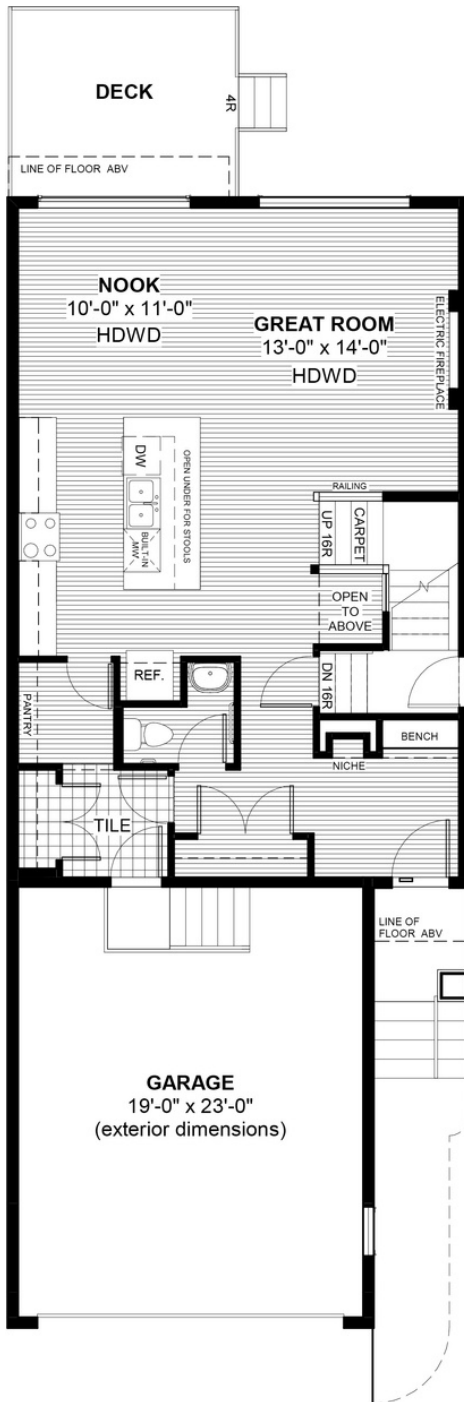
3 bedrooms



2.5 bathrooms



24'



FEATURES

- ✓ Basement Side Entry
- ✓ Extended Garage Length
- ✓ Treated Wood Deck
- ✓ Tray Ceiling in Bonus Room
- ✓ Built-In Bench to Entry
- ✓ Quartz Countertops
- ✓ Electric Fireplace
- ✓ Eng. Hardwood Main Floor
- ✓ Double Vanities to Ensuite
- ✓ Wrought Iron Railings
- ✓ Walk-Through Pantry



NOTES



*Price includes lot&gst. Price, features & plan are subject to change at any time. All plans/designs are the exclusive property of Douglas Homes Ltd.

www.douglashomes.net | crimsonridge@douglashomes.net | 587.355.2505