

# the **Foxford 2**

**1318  
sq.ft.**



3 bedrooms



2.5 bathrooms



23' wide



NOTES:

---

---

---

---

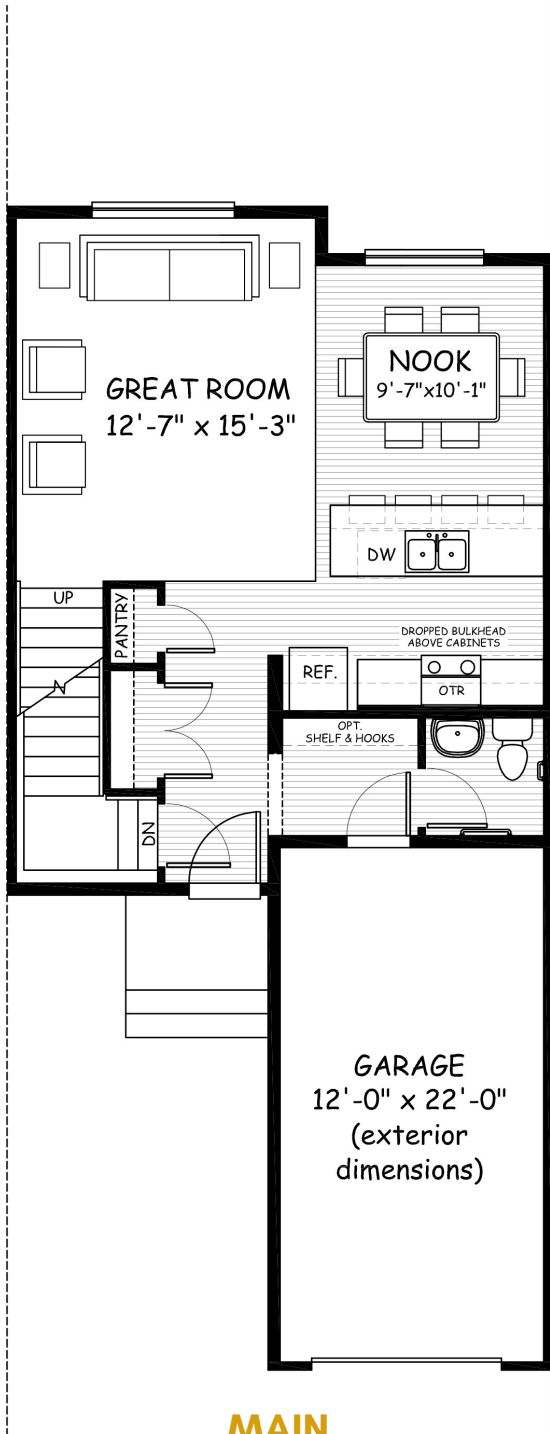


Artists's representation, may not be exactly as shown - all dimensions are approximate. All plans/designs are the exclusive property of Douglas Homes Ltd. Prices are subject to change without notice.

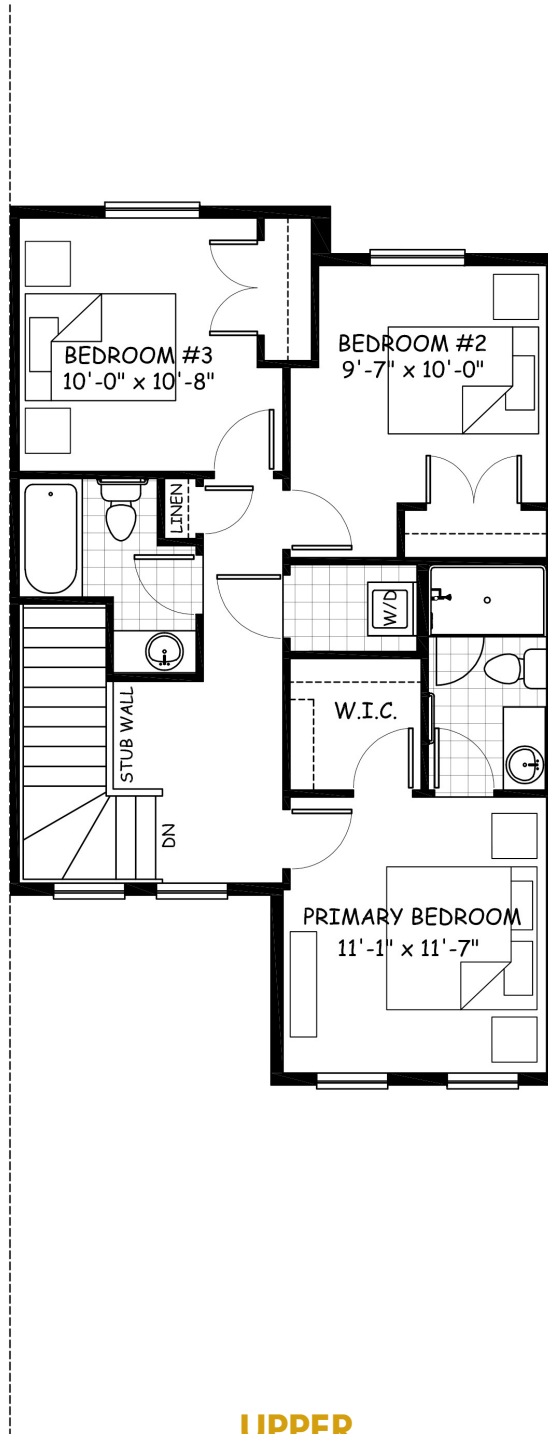
# the Foxford 2

1318 sq.ft.

23' wide  
49' long



**MAIN**  
625 sq.ft.



**UPPER**  
693 sq.ft.

April 2021. Artists's representation, may not be exactly as shown and all dimensions are approximate. All plans/designs are the exclusive property of Douglas Homes Ltd. Prices are subject to change without notice.

