

the **Kingston**

**1474
sq.ft.**



3 bedrooms



2.5 bathrooms



19'-8" wide



NOTES:

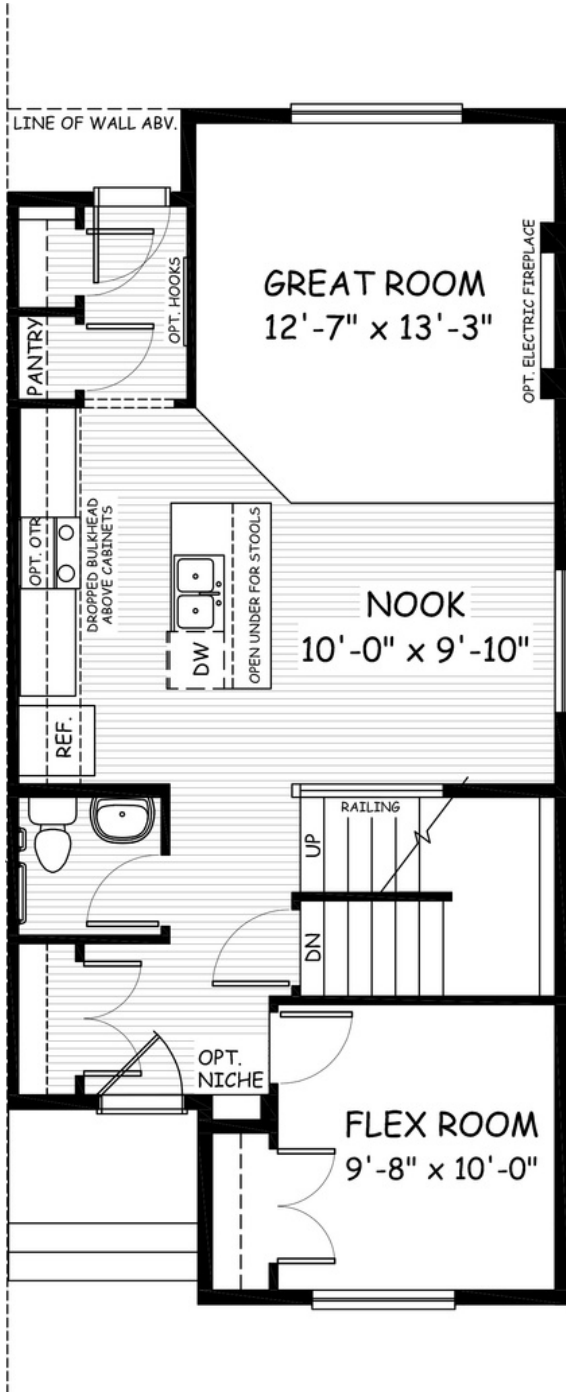


Artists's representation, may not be exactly as shown - all dimensions are approximate. All plans/designs are the exclusive property of Douglas Homes Ltd. Prices are subject to change without notice.

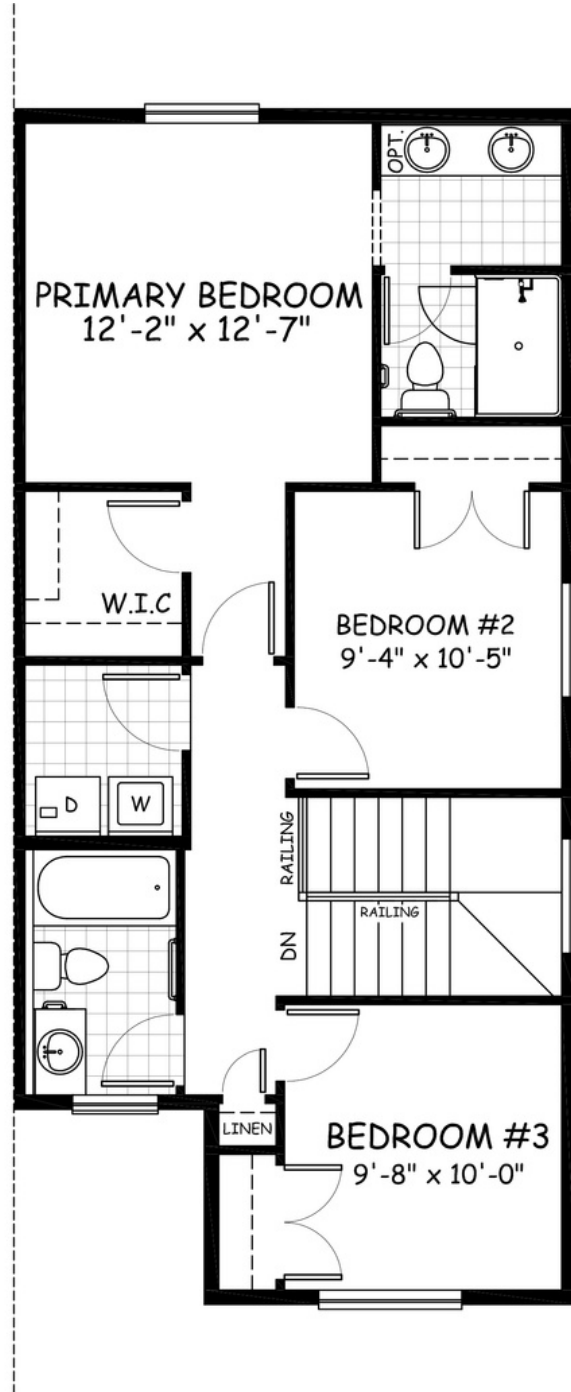
the Kingston

1474 sq.ft.

19'-8" wide
41'-10" long



MAIN
759 sq.ft.



UPPER
715 sq.ft.

April 2021. Artists's representation, may not be exactly as shown and all dimensions are approximate. All plans/designs are the exclusive property of Douglas Homes Ltd. Prices are subject to change without notice.

