

# FERNIE 2

236 Waterford Heath • Waterford, Chestermere



1369 sq ft



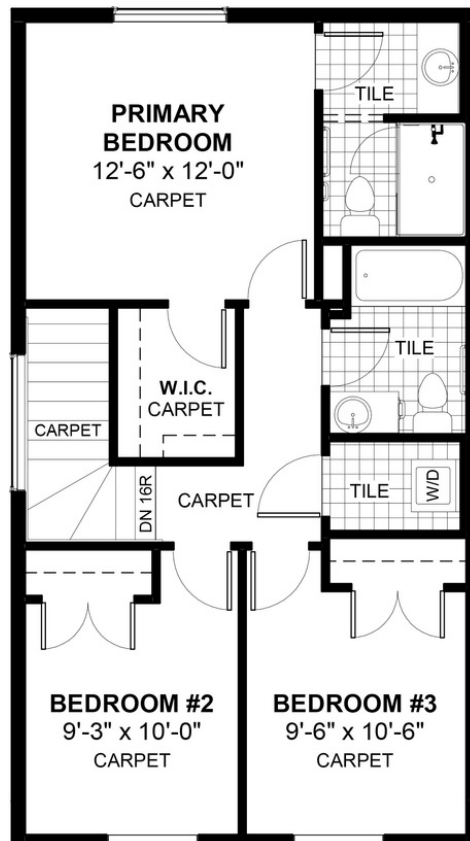
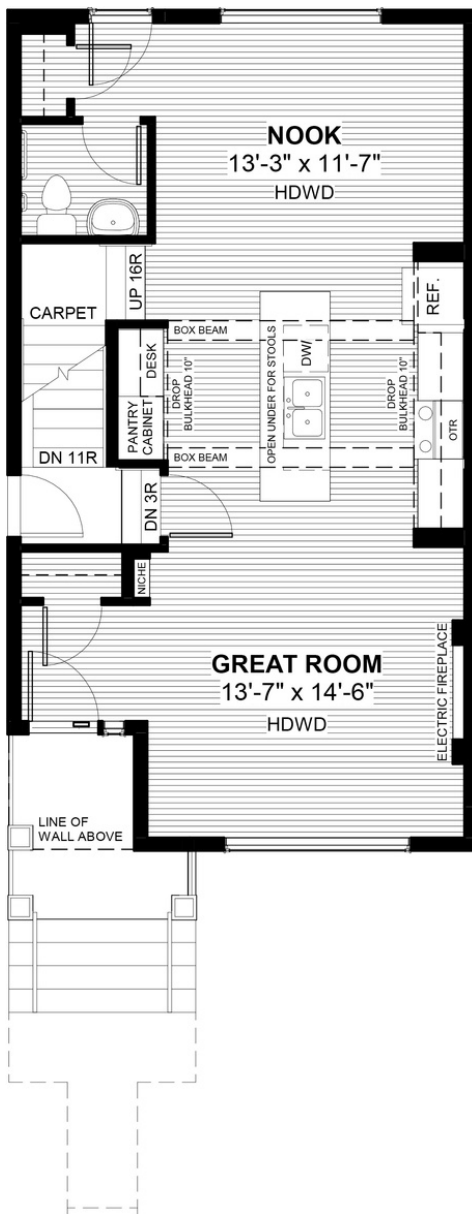
3 bedrooms



2.5 bathrooms



20'



## FEATURES

- ✓ Basement Side Entry
- ✓ Rear Parking Pad
- ✓ 9' Main Floor Ceiling
- ✓ Quartz Countertops
- ✓ Electric Fireplace
- ✓ Eng. Hardwood Main Floors
- ✓ Upper Floor Laundry
- ✓ Built-in Desk
- ✓ Tile to Baths/Laundry
- ✓ Large Kitchen Island



## NOTES

---



---



---



---



\*Price includes lot&gst. Price, features & plan are subject to change at any time. All plans/designs are the exclusive property of Douglas Homes Ltd.