

GLACIER

228 Waterford Heath • Waterford, Chestermere



1180 sq ft



3 bedrooms



2.5 bathrooms



20'

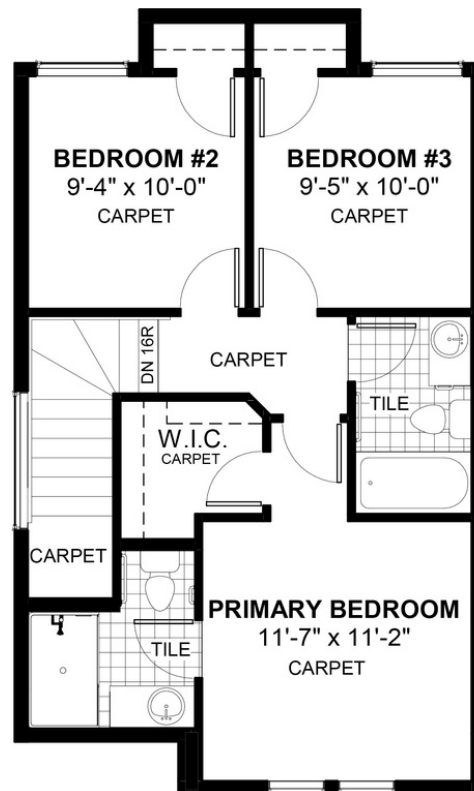
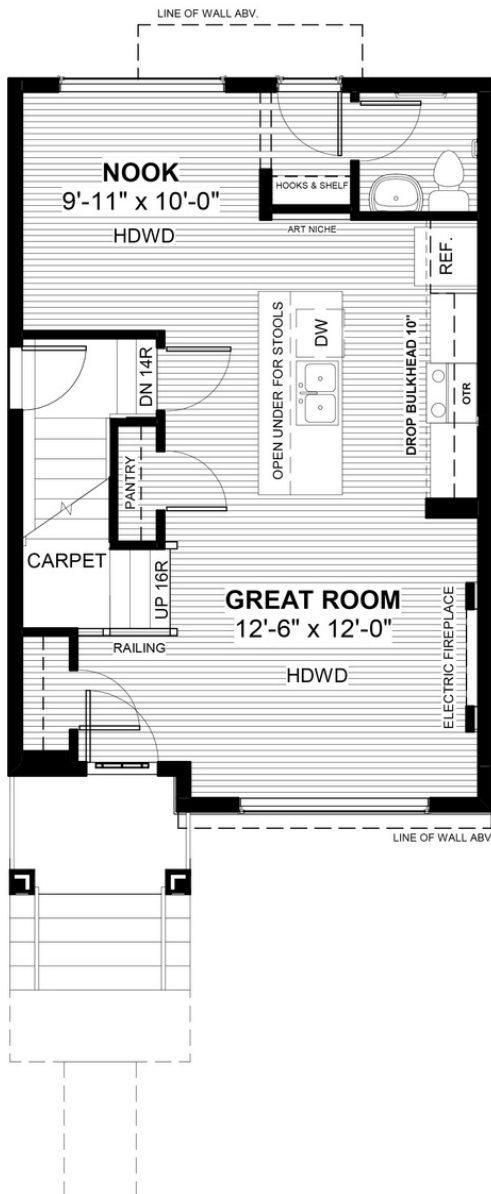


FEATURES

- ✓ Basement Side Entry
- ✓ Rear Parking Pad
- ✓ Built-In Hooks & Shelf
- ✓ 9' Main Floor Ceiling
- ✓ Quartz Countertops
- ✓ Electric Fireplace
- ✓ Wrought Iron Railings
- ✓ Eng. Hardwood Main Floors
- ✓ Large Kitchen Island



NOTES



DH
DOUGLAS HOMES
— PERFECT FIT —

*Price includes lot&gst. Price, features & plan are subject to change at any time. All plans/designs are the exclusive property of Douglas Homes Ltd.

www.douglashomes.net | waterford@douglashomes.net | 587.391.7812