

GLACIER

27 Precedence View • Precedence, Cochrane



1180 sq ft



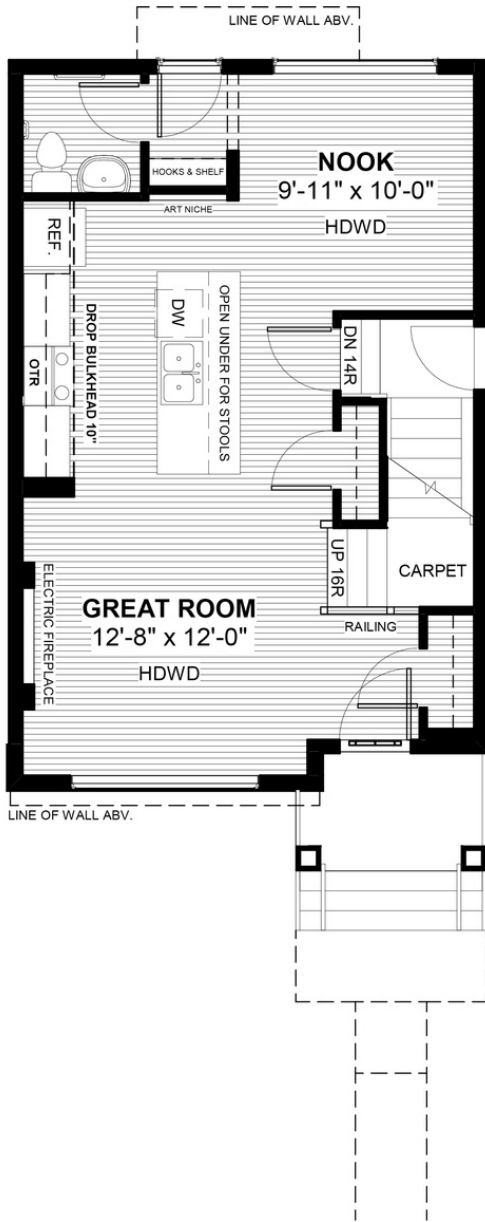
3 bedrooms



2.5 bathrooms



20'

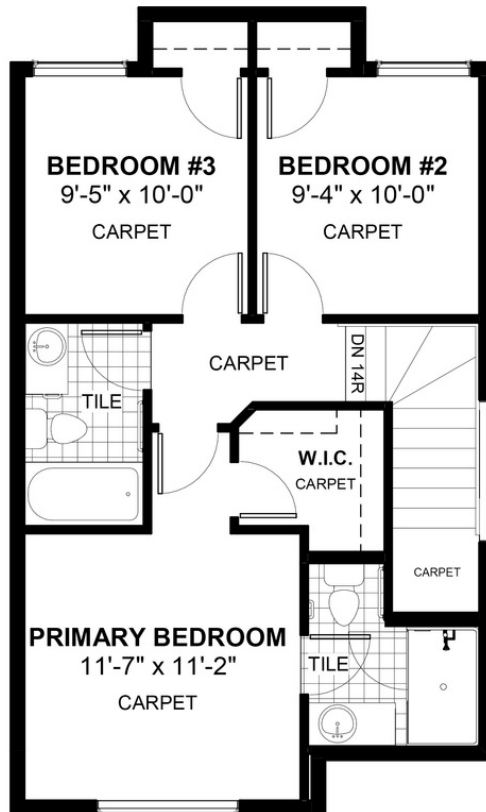


FEATURES

- ✓ Basement Side Entry
- ✓ Rear Parking Pad
- ✓ Built-In Shelf & Hooks
- ✓ 9' Main Floor Ceiling
- ✓ Quartz Countertops
- ✓ Electric Fireplace
- ✓ Eng. Hardwood Main Floor
- ✓ Large Kitchen Island



NOTES



*Price includes lot&gst. Price, features & plan are subject to change at any time. All plans/designs are the exclusive property of Douglas Homes Ltd.