

# INVERNESS

49 Sora Gate SE • Sora, Calgary



1361 sq ft



3 bedrooms



2.5 bathrooms

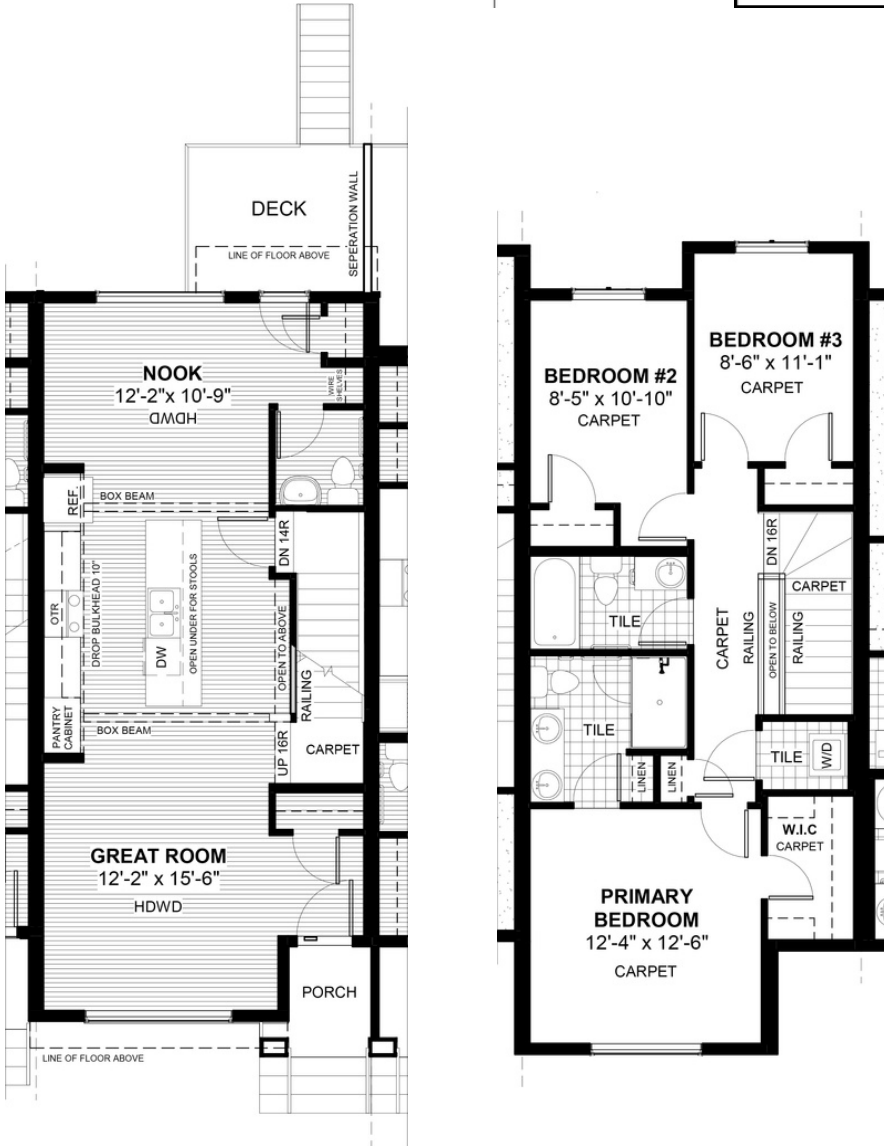


18'



## FEATURES

- ✓ Townhouse
- ✓ No Condo Fees
- ✓ Detached Double Car Garage
- ✓ Full Landscaping to Front/Back
- ✓ 9' Main Floor Ceiling
- ✓ Treated Wood Deck
- ✓ Quartz Countertops
- ✓ Eng. Hardwood Main Floor
- ✓ Wrought Iron Railings
- ✓ Double Sinks to Ensuite



\*Price includes lot&gst. Price, features & plan are subject to change at any time. All plans/designs are the exclusive property of Douglas Homes Ltd.