

# ST. ANDREWS

322 Sundown Road • Sunset Ridge, Cochrane



1305 sq ft



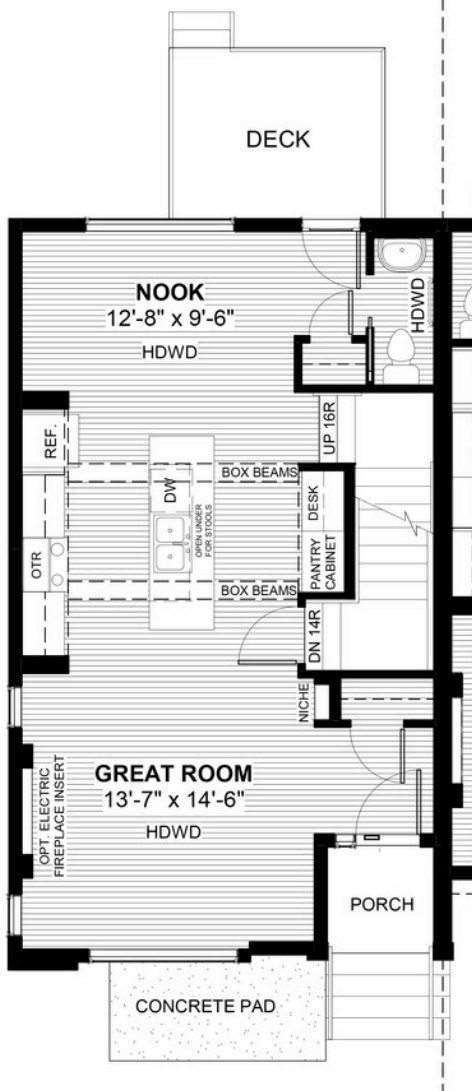
3 bedrooms



2.5 bathrooms



20'



## FEATURES

- ✓ Townhouse - End Unit
- ✓ No Condo Fees
- ✓ Rear Garage
- ✓ Front Concrete Pad
- ✓ 9' Main Floor Ceiling
- ✓ Treated Wood Deck
- ✓ Full Landscaping to Front/Back
- ✓ Quartz Countertops
- ✓ Eng. Hardwood Main Floor
- ✓ Built-In Desk



\*Price includes lot&gst. Price, features & plan are subject to change at any time. All plans/designs are the exclusive property of Douglas Homes Ltd.