

VICTORIA

56 Shale Avenue • Greystone, Cochrane



1393 sq ft



3 bedrooms



2.5 bathrooms

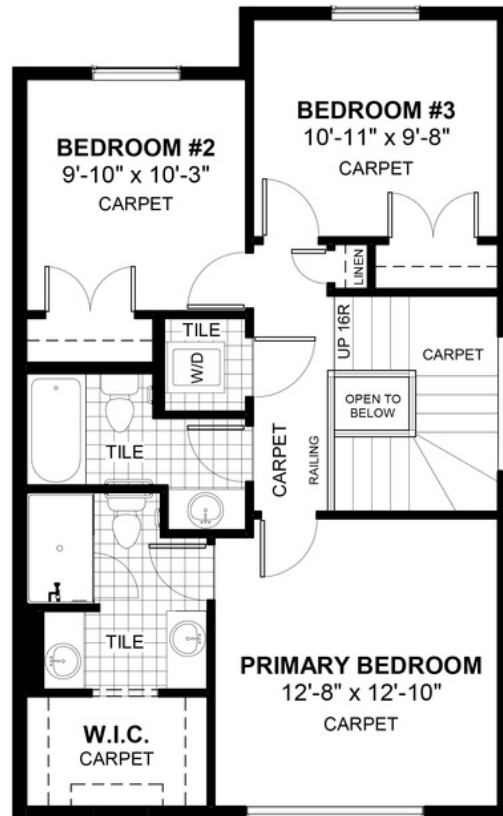
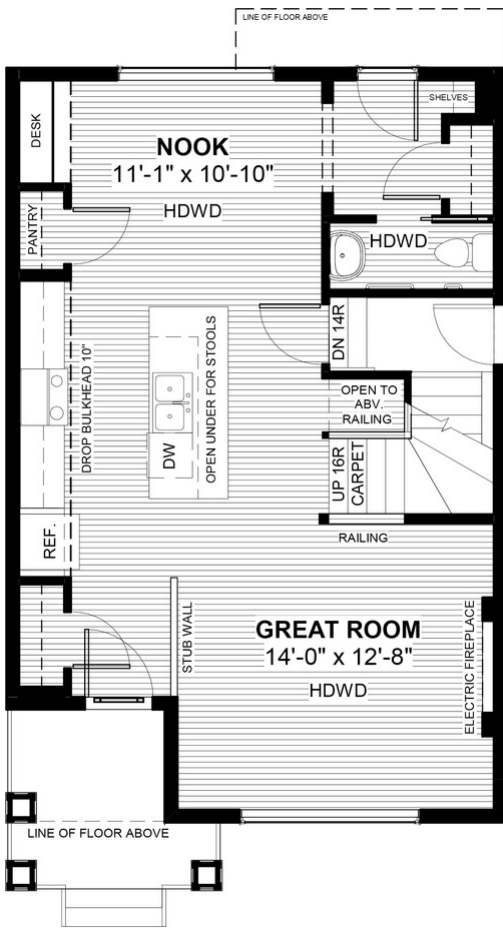


22'



FEATURES

- ✓ Basement Side Entry
- ✓ Rear Parking Pad
- ✓ 9' Main Floor Ceiling
- ✓ Quartz Countertops
- ✓ Electric Fireplace
- ✓ Eng. Hardwood Main Floors
- ✓ Upper Floor Laundry
- ✓ Tile to Baths/Laundry
- ✓ Built-In Desk to Nook
- ✓ Double Vanities to Ensuite



NOTES



*Price includes lot&gst. Price, features & plan are subject to change at any time. All plans/designs are the exclusive property of Douglas Homes Ltd.