

ADELAIDE

476 Sora Boulevard SE • Sora, Calgary



1362 sq ft



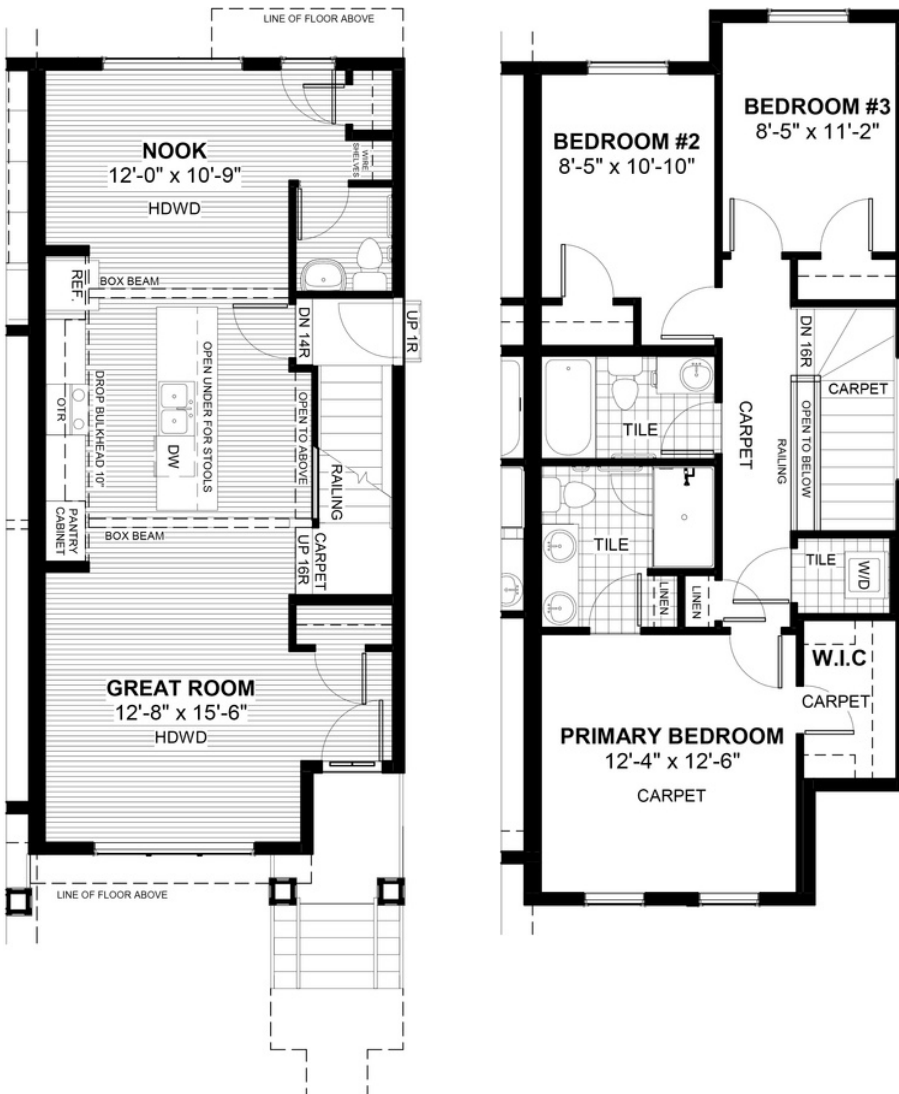
3 bedrooms



2.5 bathrooms



18'



FEATURES

- ✓ Duplex (Right Unit)
- ✓ Basement Side Entry
- ✓ Rear Parking Pad
- ✓ 9' Main Floor Ceiling
- ✓ Quartz Countertops
- ✓ Upper Floor Laundry
- ✓ Eng. Hardwood Main Floor
- ✓ Double Sinks to Ensuite
- ✓ Large Kitchen Island
- ✓ Wire Shelves at Rear



NOTES



*Price includes lot&gst. Price, features & plan are subject to change at any time. All plans/designs are the exclusive property of Douglas Homes Ltd.