

# ASHTON

40 Precedence View • Precedence, Cochrane



1804 sq ft



3 bedrooms



2.5 bathrooms



23'

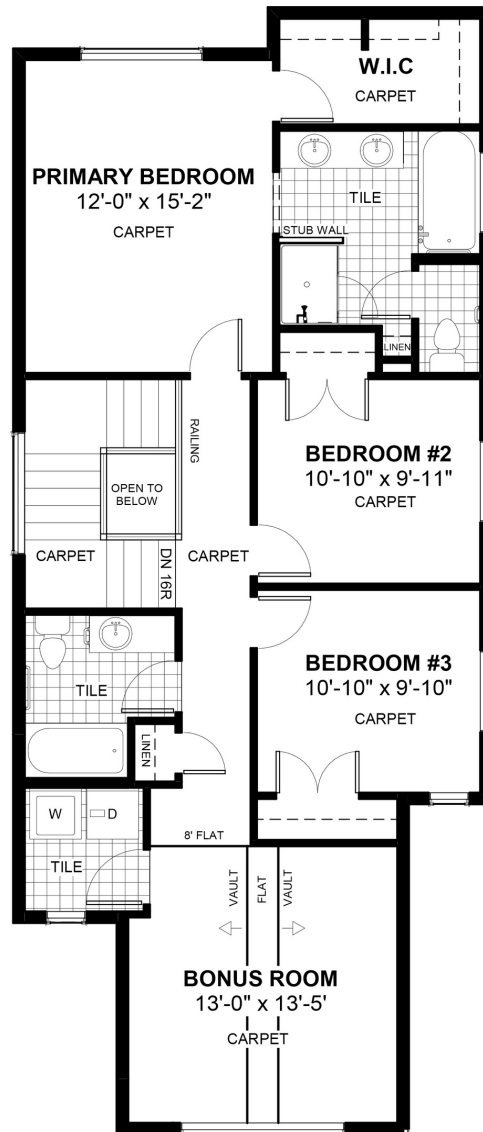
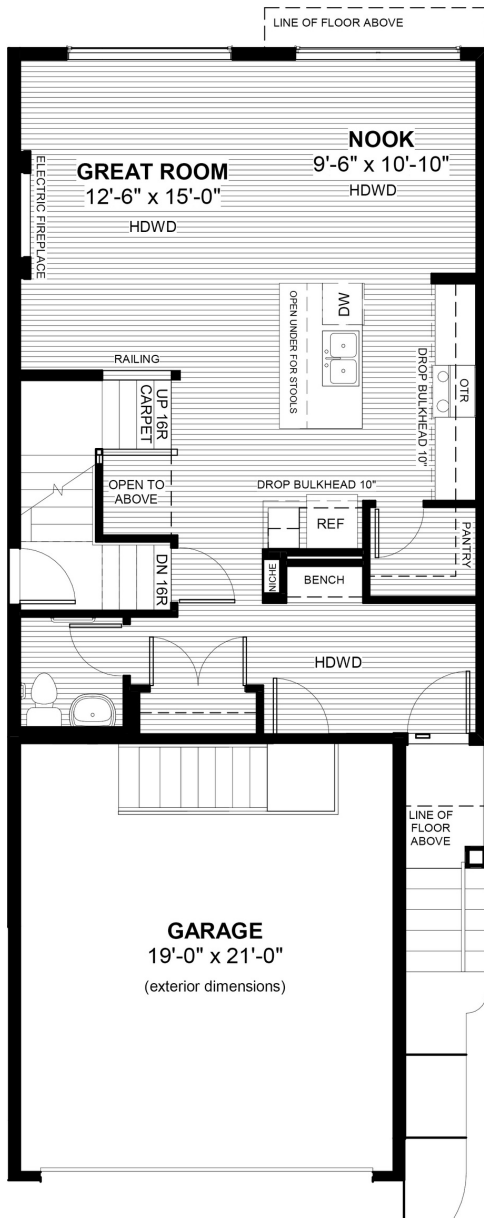


## FEATURES

- ✓ Basement Side Entry
- ✓ Vaulted Bonus Room
- ✓ 9' Main Floor Ceiling
- ✓ Quartz Countertops
- ✓ Electric Fireplace
- ✓ Eng. Hardwood Main Floors
- ✓ Built-In Bench to Entry
- ✓ Upper Floor Laundry
- ✓ 4 Piece Ensuite
- ✓ Double Sinks to Ensuite



## NOTES



\*Price includes lot&gst. Price, features & plan are subject to change at any time. All plans/designs are the exclusive property of Douglas Homes Ltd.