

# GLENDALE

240 Crimson Ridge Place NW • Crimson Ridge, Calgary



2224 sq ft



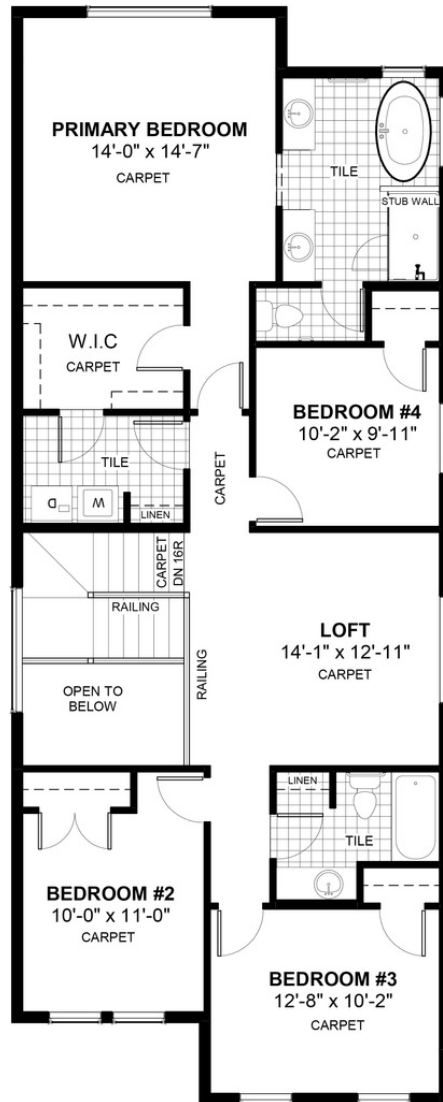
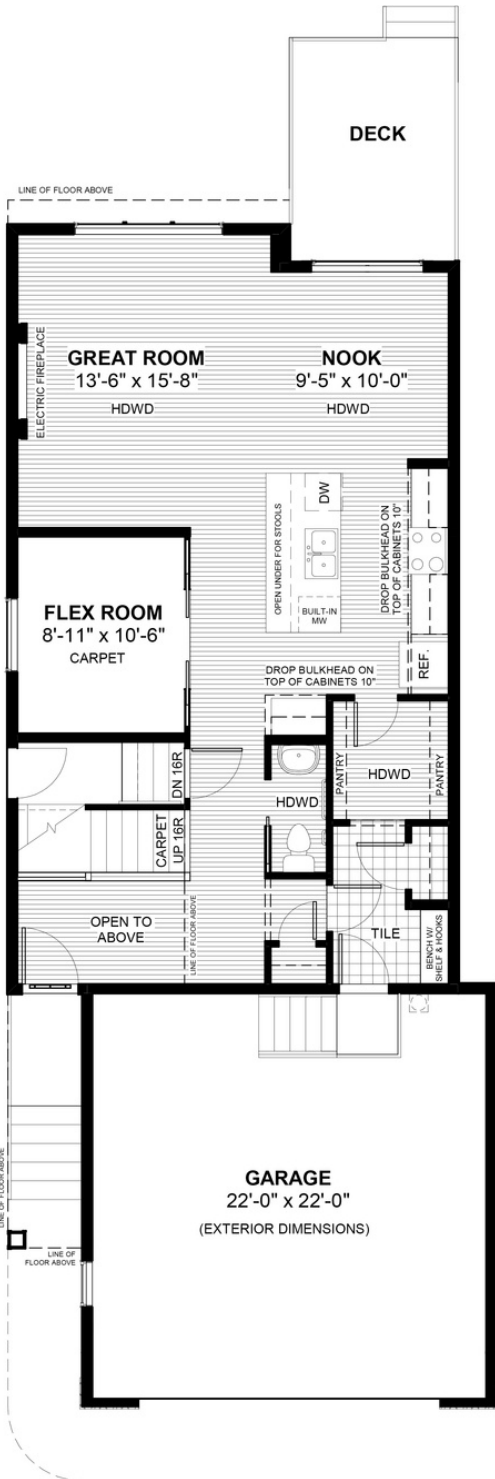
4 bedrooms



2.5 bathrooms



24'



## FEATURES

- ★ **Basement Side Entry**
- ✓ Four Bedrooms
- ✓ Rear Treated Wood Deck
- ✓ Oversized Garage
- ✓ Upper Floor Loft
- ✓ 9' Main Floor Ceiling
- ✓ Walk-Through Pantry
- ✓ Quartz Countertops
- ✓ Electric Fireplace
- ✓ Eng. Hardwood Main Floors
- ✓ Main Floor Flex Room



## NOTES



\*Price includes lot&gst. Price, features & plan are subject to change at any time. All plans/designs are the exclusive property of Douglas Homes Ltd.