

# MELBOURNE

216 Langwell Common SE • Lanark, Airdrie



1283 sq ft



3 bedrooms



2.5 bathrooms

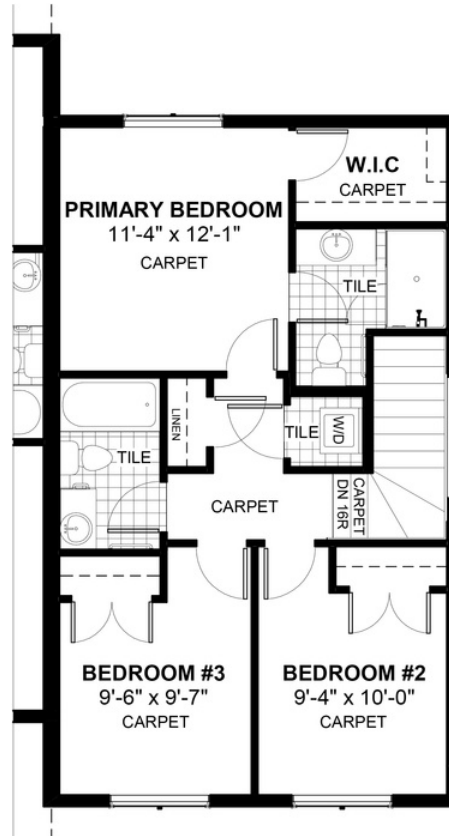
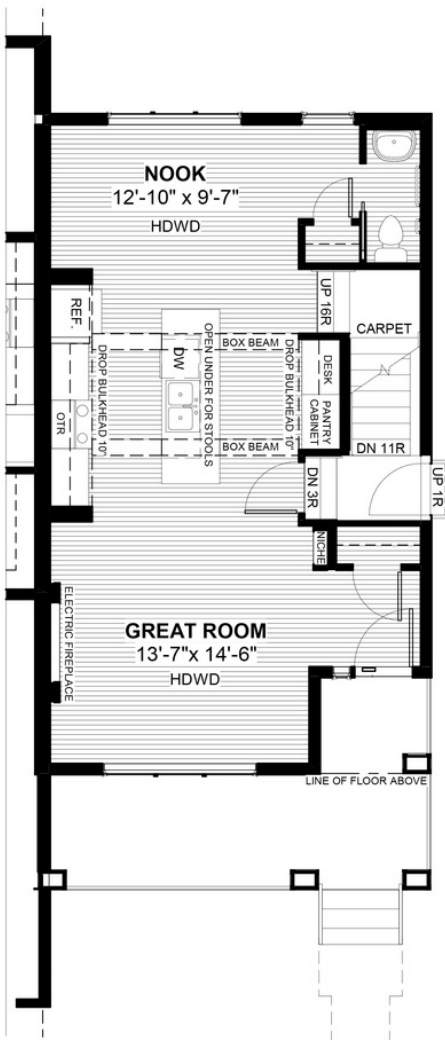


20'



## FEATURES

- ✓ Duplex (Right Unit)
- ✓ Rear Parking Pad
- ✓ Basement Side Entry
- ✓ Full Width Porch
- ✓ 9' Main Floor Ceiling
- ✓ Quartz Countertops
- ✓ Upper Floor Laundry
- ✓ Electric Fireplace
- ✓ Eng. Hardwood Main Floor
- ✓ Built-In Desk to Kitchen



## NOTES

---



---



---



---



\*Price includes lot&gst. Price, features & plan are subject to change at any time. All plans/designs are the exclusive property of Douglas Homes Ltd.