

SONOITA

248 Crimson Ridge Place NW • Crimson Ridge, Calgary



2147 sq ft



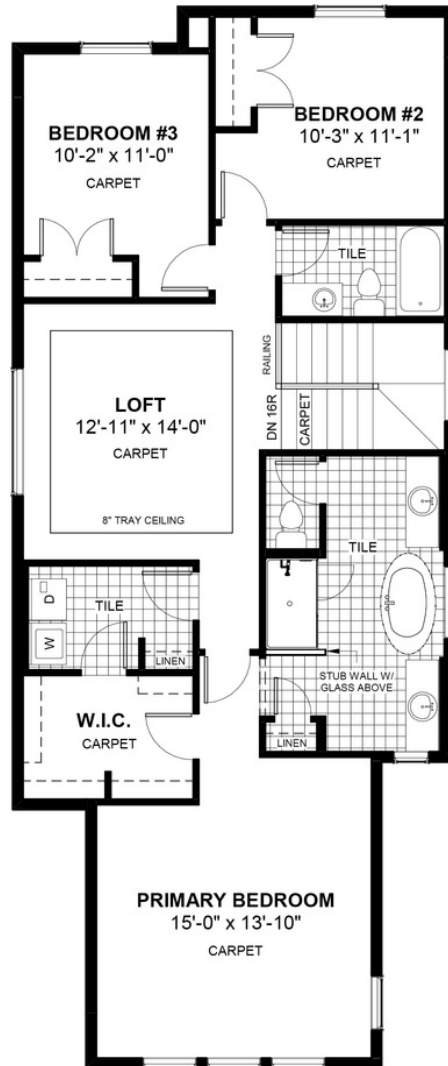
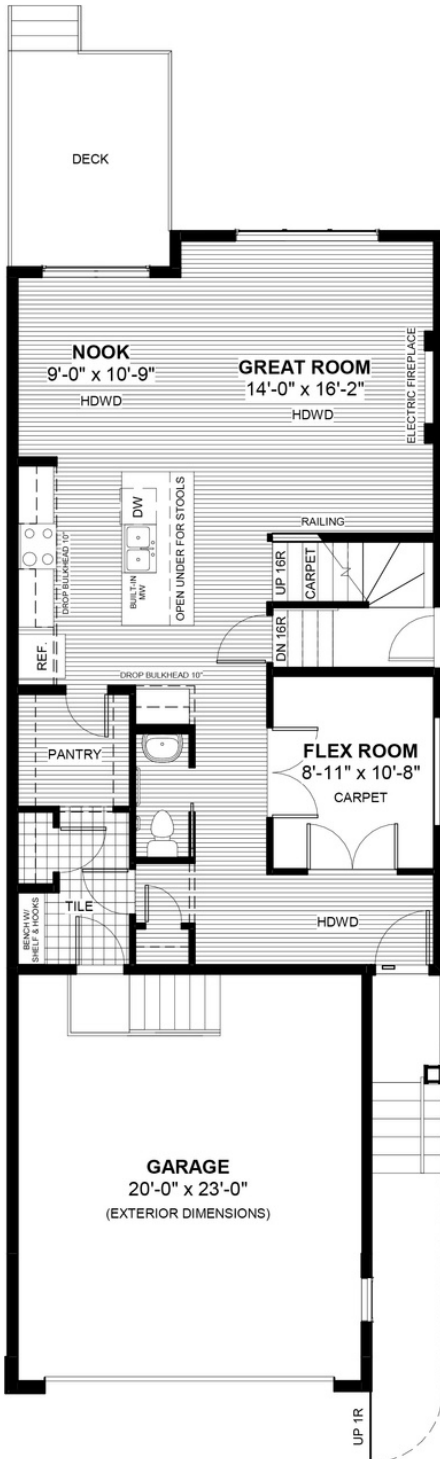
3 bedrooms



2.5 bathrooms



24'



FEATURES

- ★ **Basement Side Entry**
- ✓ Extended Garage Length
- ✓ Treated Wood Deck
- ✓ Upper Floor Loft
- ✓ Tray Ceiling in Loft
- ✓ 9' Main Floor Ceiling
- ✓ Walk-Through Pantry
- ✓ Quartz Countertops
- ✓ Electric Fireplace
- ✓ Eng. Hardwood Main Floor
- ✓ Main Floor Flex Room
- ✓ Double Vanities to Ensuite



NOTES



*Price includes lot&gst. Price, features & plan are subject to change at any time. All plans/designs are the exclusive property of Douglas Homes Ltd.