

MONTENEGRO 4

114 Precedence View • Precedence, Cochrane



2016 sq ft



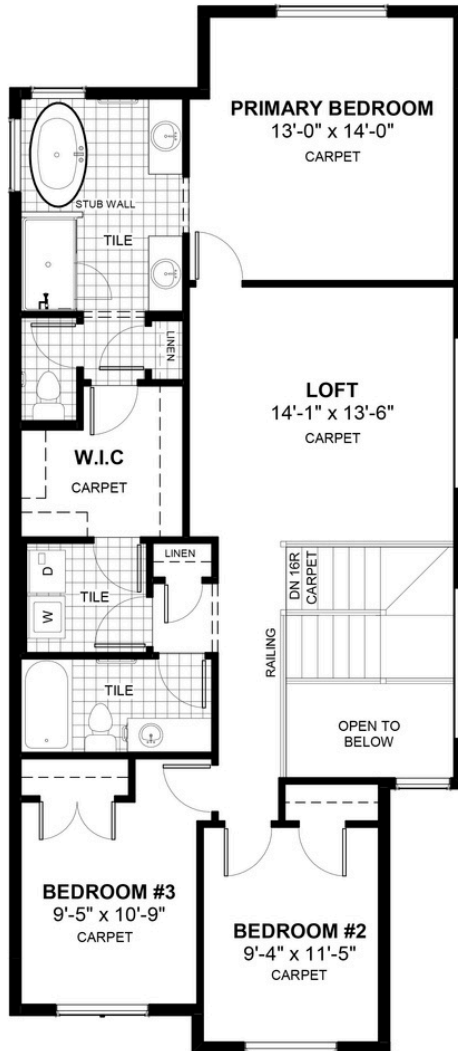
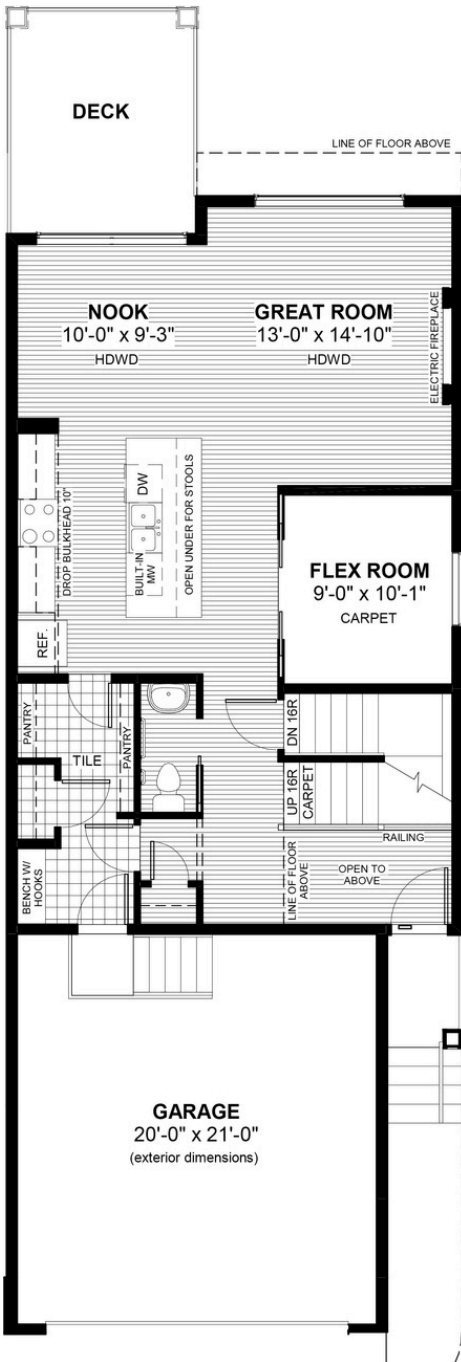
3 bedrooms



2.5 bathrooms



24'



FEATURES

- ★ 9' Walk-Out Basement
- ✓ Treated Wood Deck
- ✓ 9' Main Floor Ceiling
- ✓ Quartz Countertops
- ✓ Electric Fireplace
- ✓ Eng. Hardwood Main Floors
- ✓ Main Floor Flex Room
- ✓ Upper Floor Loft
- ✓ Walk-through Pantry
- ✓ Double Vanities to Ensuite



NOTES



*Price includes lot&gst. Price, features & plan are subject to change at any time. All plans/designs are the exclusive property of Douglas Homes Ltd.