

INVERNESS

368 Sora Boulevard SE • Sora, Calgary



1361 sq ft



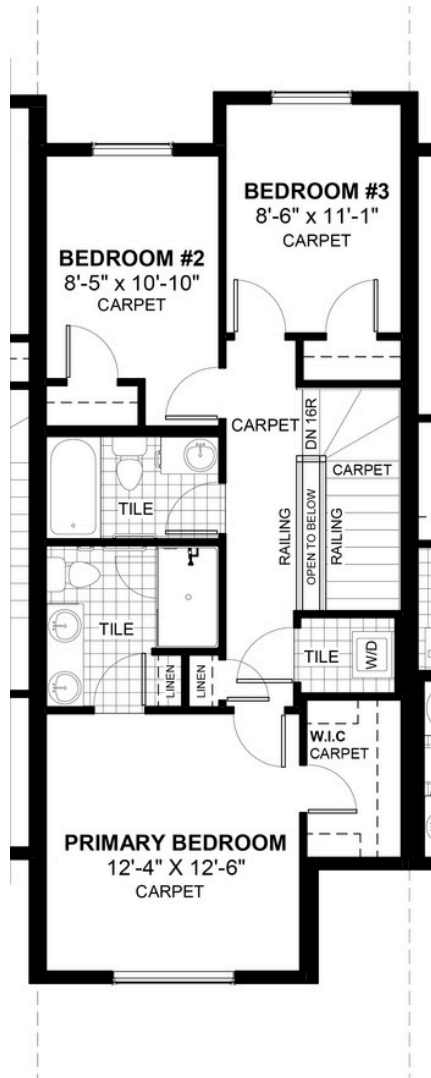
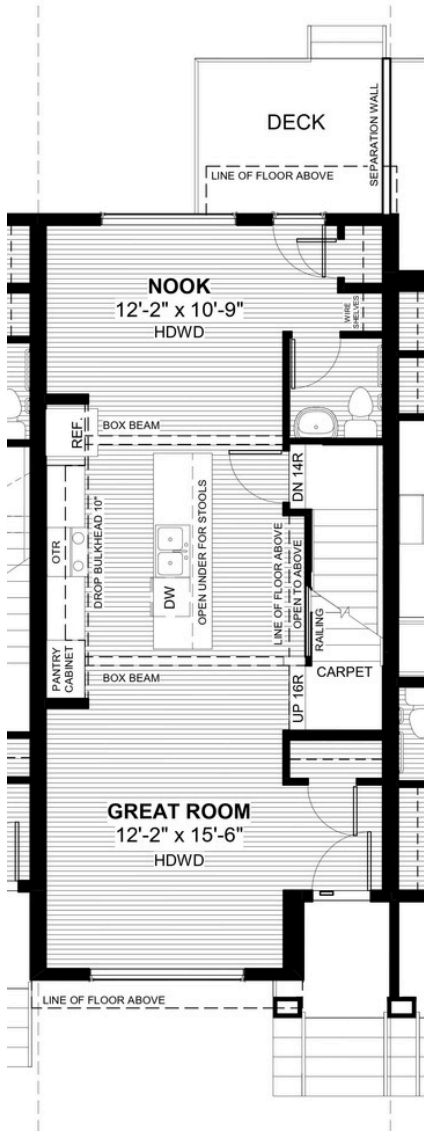
3 bedrooms



2.5 bathrooms



18'



FEATURES

- ✓ Townhouse
- ✓ No Condo Fees
- ✓ Detached Double Car Garage
- ✓ Full Landscaping to Front/Back
- ✓ 9' Main Floor Ceiling
- ✓ Quartz Countertops
- ✓ Eng. Hardwood Main Floor
- ✓ Treated Wood Deck
- ✓ Double Sinks to Ensuite
- ✓ Walk-in Closet



*Price includes lot&gst. Price, features & plan are subject to change at any time. All plans/designs are the exclusive property of Douglas Homes Ltd.