

FAIRMONT

48 Precedence View • Precedence, Cochrane



1602 sq ft



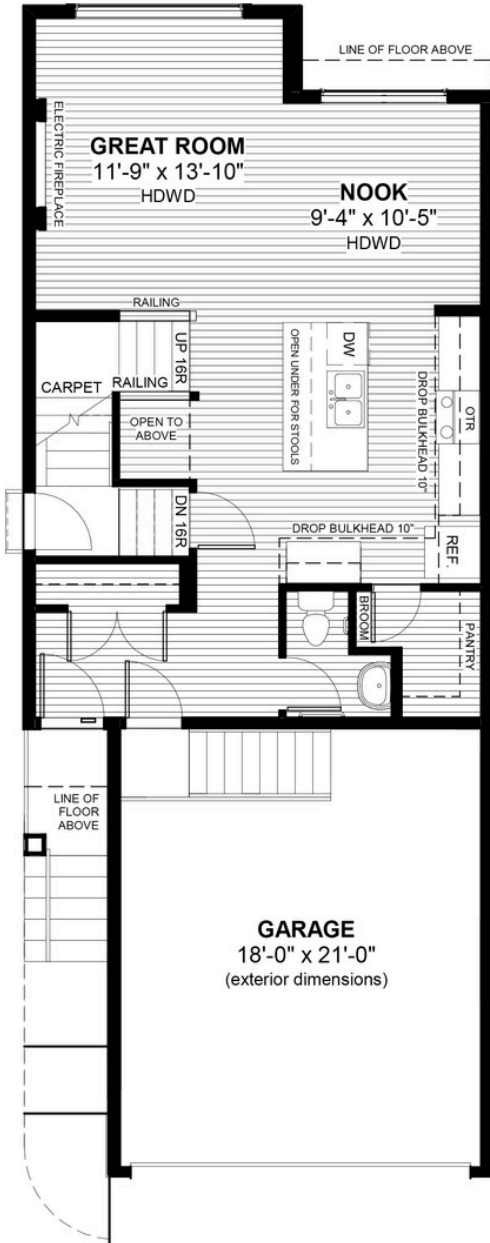
3 bedrooms



2.5 bathrooms



22'



FEATURES

- ✓ Basement Side Entry
- ✓ 9' Main Floor Ceiling
- ✓ Upper Floor Loft
- ✓ Quartz Countertops
- ✓ Electric Fireplace
- ✓ Eng. Hardwood Main Floors
- ✓ Tile to Baths/Laundry
- ✓ Double Sinks to Ensuite
- ✓ Walk-in Pantry



NOTES



*Price includes lot&gst. Price, features & plan are subject to change at any time. All plans/designs are the exclusive property of Douglas Homes Ltd.