

GLACIER

276 Waterford Heath • Waterford, Chestermere



1180 sq ft



3 bedrooms



2.5 bathrooms

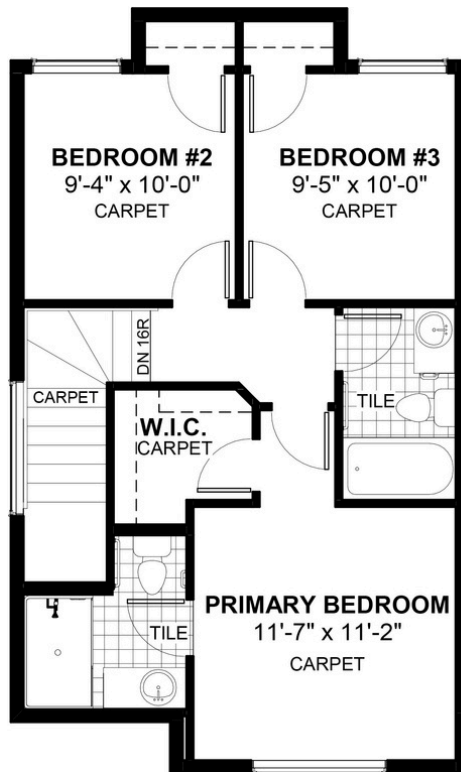
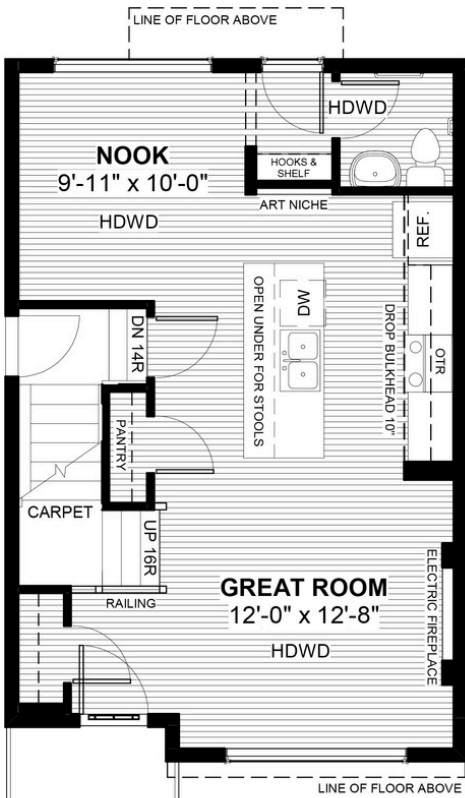


20'



FEATURES

- ✓ Basement Side Entry
- ✓ Rear Parking Pad
- ✓ 9' Main Floor Ceiling
- ✓ Quartz Countertops
- ✓ Electric Fireplace
- ✓ Eng. Hardwood Main Floors
- ✓ Built-In Hooks/Shelf to Rear
- ✓ Walk-in Closet
- ✓ Tiles to Bath/Laundry



NOTES



*Price includes lot&gst. Price, features & plan are subject to change at any time. All plans/designs are the exclusive property of Douglas Homes Ltd.