

PRIMROSE

10 Waterford Link • Waterford, Chestermere



1490 sq ft



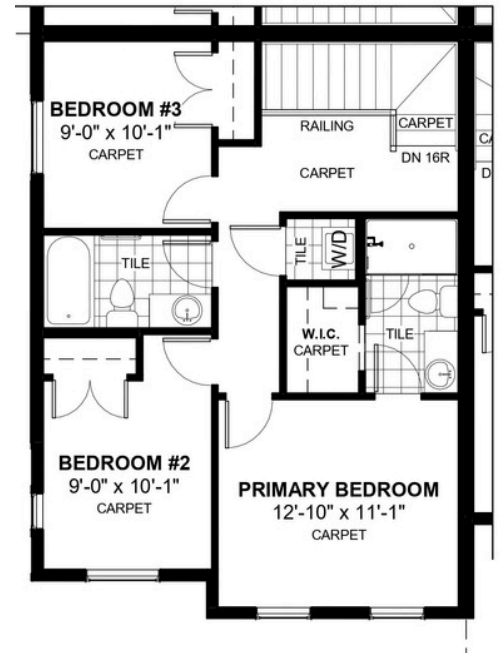
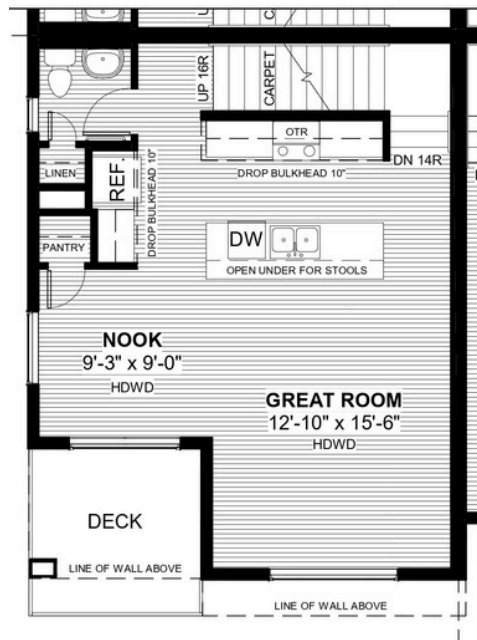
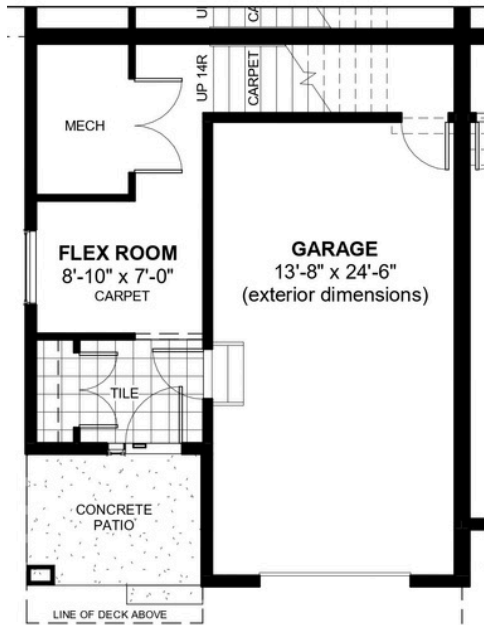
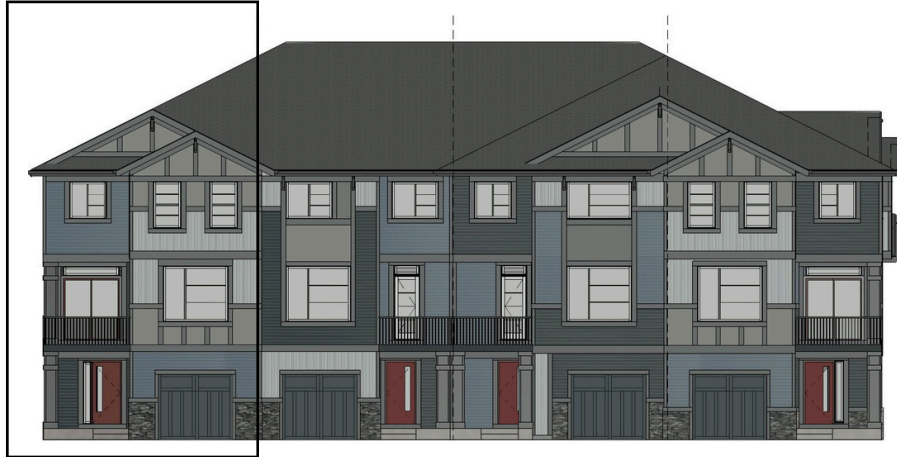
3 bedrooms



2.5 bathrooms



23'



FEATURES

- ✓ Back to Back Townhouse
- ✓ No Condo Fees
- ✓ Single Car Garage
- ✓ 9' Main Floor Ceiling
- ✓ Upper Floor Laundry
- ✓ Treated Wood Deck
- ✓ Full Landscaping
- ✓ Quartz Countertops
- ✓ Eng. Hardwood Main Floor
- ✓ Ground Level Flex Room



*Price includes lot&gst. Price, features & plan are subject to change at any time. All plans/designs are the exclusive property of Douglas Homes Ltd.