

SIERRA VISTA

128 Crimson Ridge Place NW • Crimson Ridge, Calgary



2076 sq ft



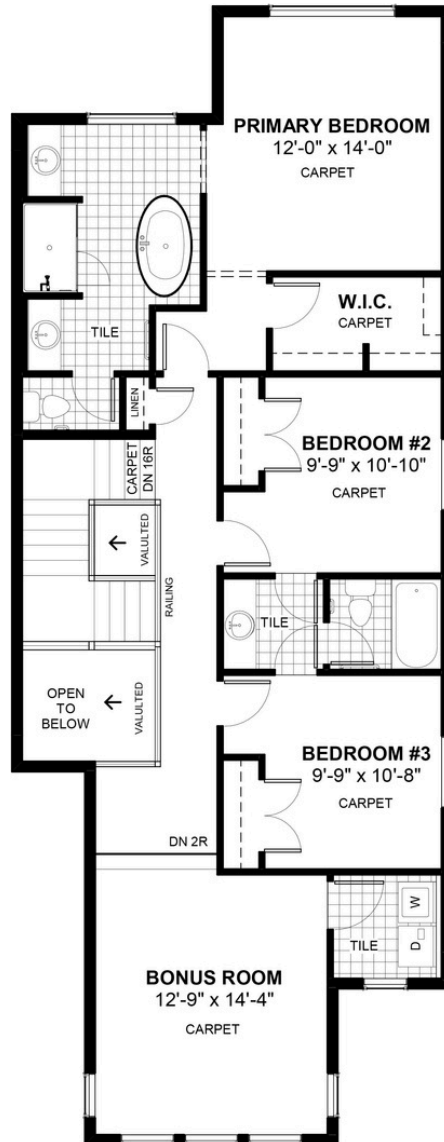
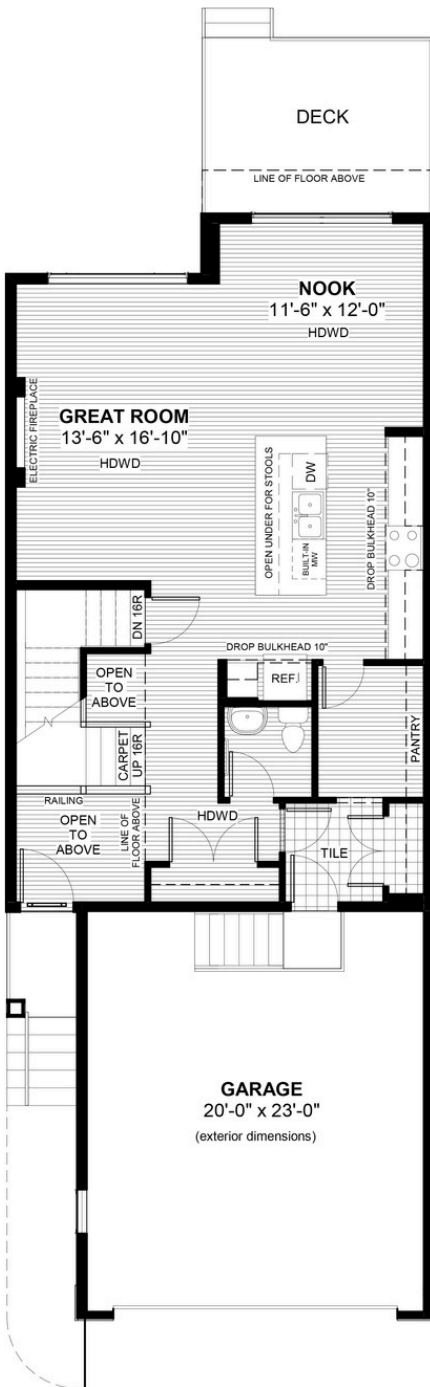
3 bedrooms



2.5 bathrooms



24'



FEATURES

- ✓ Extended Garage Length
- ✓ Treated Wood Deck
- ✓ 9' Bonus Room Ceiling
- ✓ 9' Main Floor Ceiling
- ✓ Quartz Countertops
- ✓ Electric Fireplace
- ✓ Eng. Hardwood Main Floors
- ✓ Vaulted Foyer Ceiling
- ✓ Double Vanities to Ensuite
- ✓ Walk-through Pantry
- ✓ Tiled Mudroom



NOTES



*Price includes lot&gst. Price, features & plan are subject to change at any time. All plans/designs are the exclusive property of Douglas Homes Ltd.