

SILVERTON

92 Sundown Crescent • Sunset Ridge, Cochrane



2004 sq ft



3 bedrooms



2.5 bathrooms

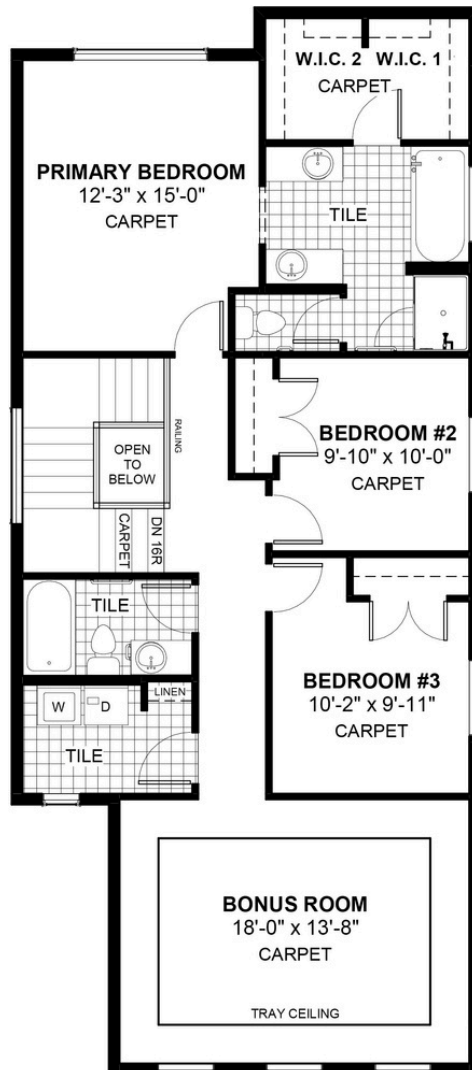


24'



FEATURES

- ✓ Basement Side Entry
- ✓ 9' Main Floor Ceiling
- ✓ Quartz Countertops
- ✓ Electric Fireplace
- ✓ Eng. Hardwood Main Floors
- ✓ Tray Ceiling in Bonus Room
- ✓ Built-in Bench to Entrance
- ✓ Tiles to Bath and Laundry
- ✓ Double Vanities to Ensuite
- ✓ Walk-in Closet



NOTES



*Price includes lot&gst. Price, features & plan are subject to change at any time. All plans/designs are the exclusive property of Douglas Homes Ltd.