

WINDERMERE

208 Langwell Common SE • Lanark, Airdrie



1490 sq. ft



3 bedrooms



2.5 bathrooms

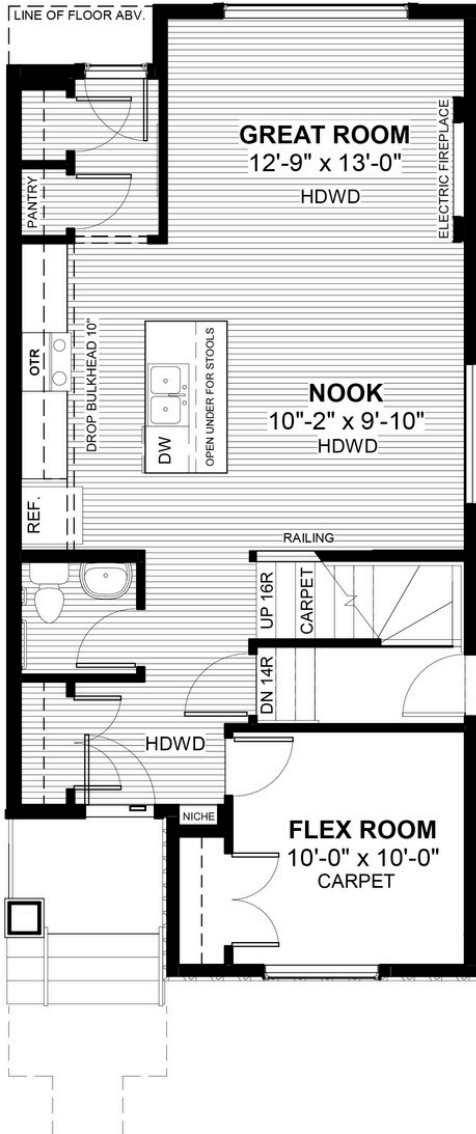


20'



FEATURES

- ✓ Main Floor Flex Room
- ✓ Basement Side Entry
- ✓ Rear Parking Pad
- ✓ 9' Main Floor Ceiling
- ✓ Walk-in Pantry
- ✓ Quartz Countertops
- ✓ Eng. Hardwood Main Floors
- ✓ Electric Fireplace
- ✓ Walk in Closet
- ✓ Tiles to Bath/Laundry



NOTES



*Price includes lot&gst. Price, features & plan are subject to change at any time. All plans/designs are the exclusive property of Douglas Homes Ltd.