

# MOUNT RUNDLE

268 Crimson Ridge Place NW • Crimson Ridge, Calgary



2034 sq ft



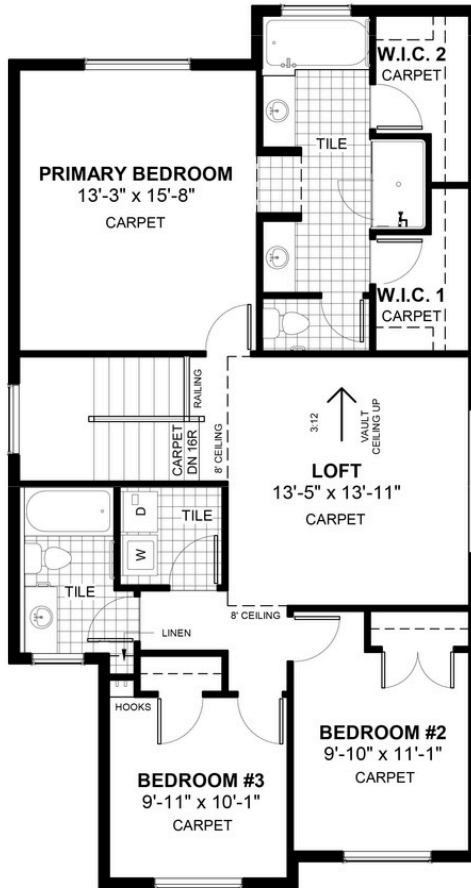
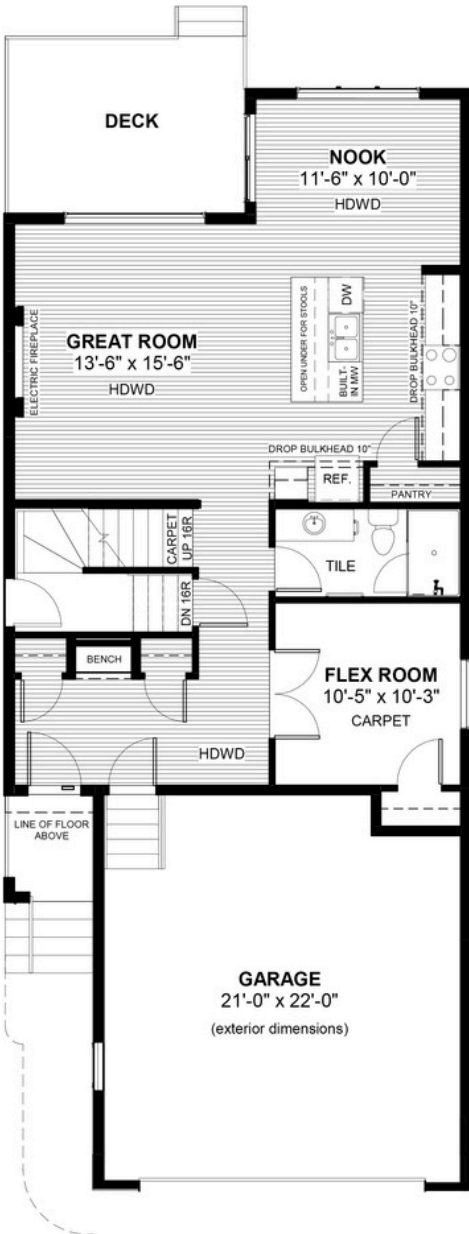
3+1 bedrooms



3 bathrooms



26'



## FEATURES

- ★ Full Bath on Main Floor
- ✓ Basement Side Entry
- ✓ Extended Garage Length
- ✓ Vaulted Upper Floor Loft
- ✓ Treated Wood Deck
- ✓ Electric Fireplace
- ✓ Eng. Hardwood Main Floors
- ✓ Double Vanities to Ensuite
- ✓ Built-In Bench to Entry
- ✓ Main Floor Flex Room



## NOTES



\*Price includes lot&gst. Price, features & plan are subject to change at any time. All plans/designs are the exclusive property of Douglas Homes Ltd.