

# SILVERTON

136 Crimson Ridge Place NW • Crimson Ridge, Calgary



2004 sq ft



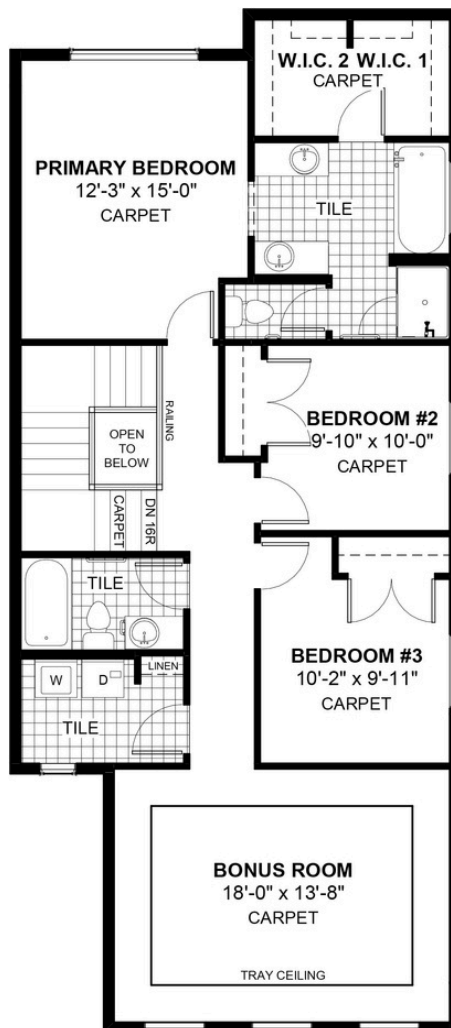
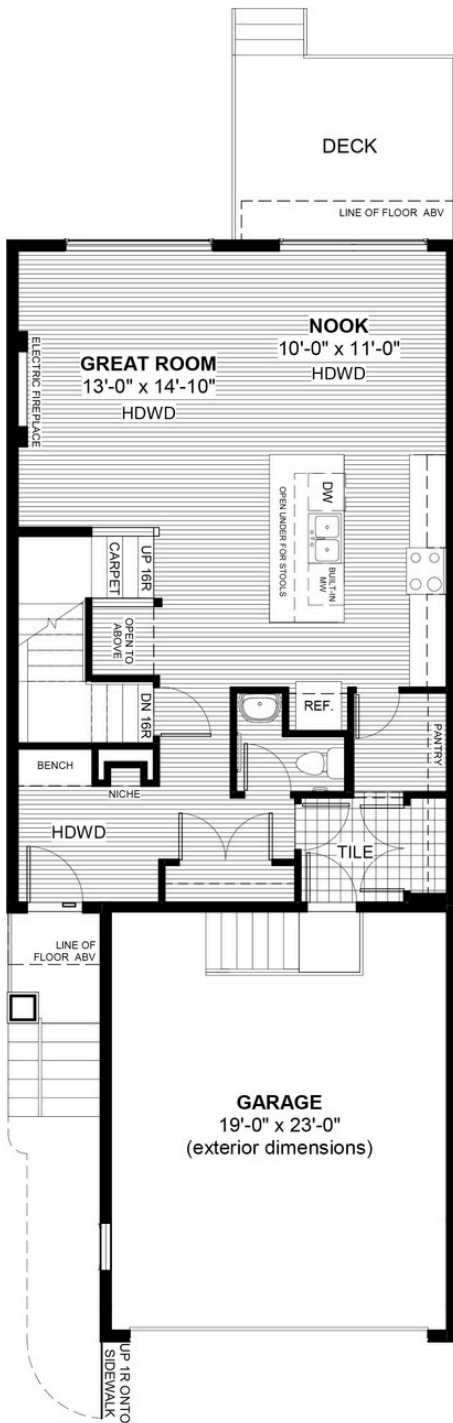
3 bedrooms



2.5 bathrooms



24'



## FEATURES

- ✓ Extended Garage Length
- ✓ Treated Wood Deck
- ✓ 9' Main Floor Ceiling
- ✓ Electric Fireplace
- ✓ Eng. Hardwood Main Floors
- ✓ Walk-Through Pantry
- ✓ Built-In Bench to Entry
- ✓ Double Vanities to Ensuite
- ✓ Tiles to bath and laundry
- ✓ Tray Ceiling in Bonus Room



## NOTES

---



---



---



\*Price includes lot&gst. Price, features & plan are subject to change at any time. All plans/designs are the exclusive property of Douglas Homes Ltd.