

# ABERDEEN

9 Sora Gate SE • Sora, Calgary



1512 sq ft



3 bedrooms



2.5 bathrooms



18'



## FEATURES

- ★ **Corner Unit**
- ✓ No Condo fees
- ✓ Detached Double Car Garage
- ✓ 9' Main Floor Ceiling
- ✓ Quartz Countertops
- ✓ Eng. Hardwood Main Floors
- ✓ Full landscaping to front/back
- ✓ Main Floor Flex Room
- ✓ Rear Treated Wood Deck
- ✓ Electric Fireplace



## NOTES

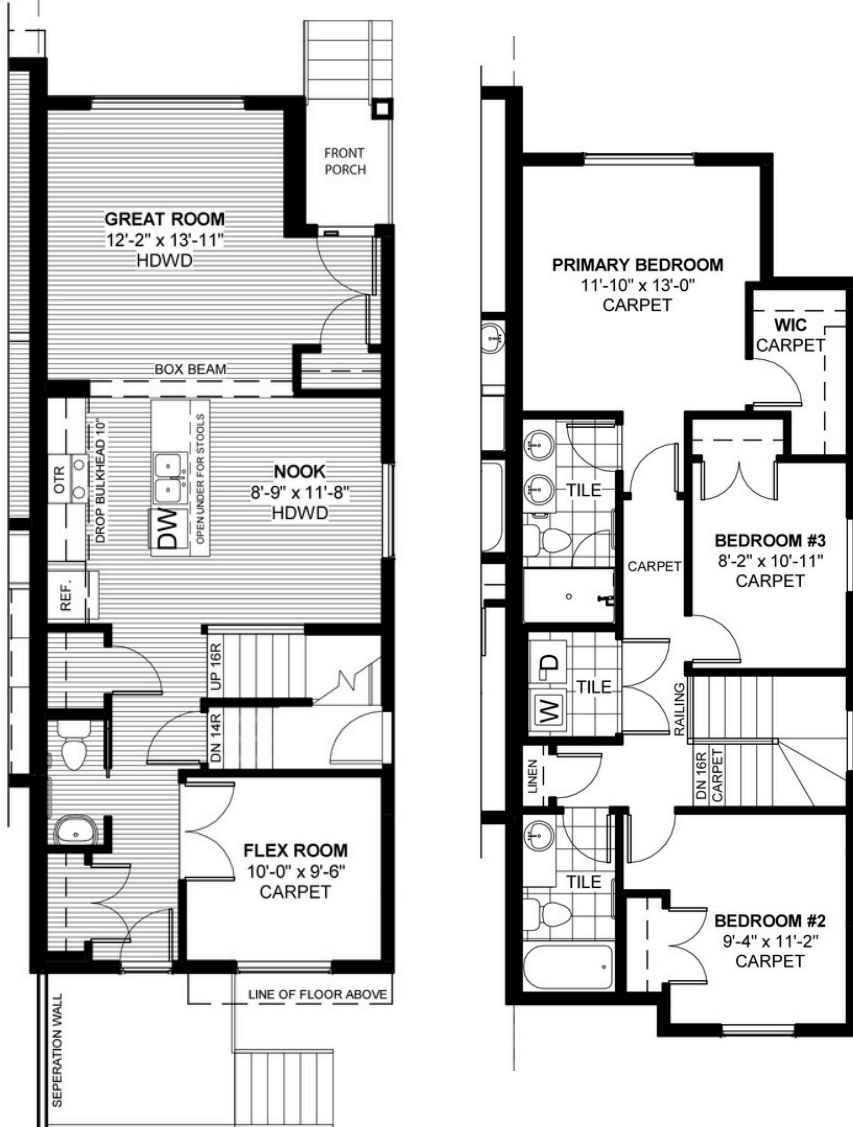
---



---



---



\*Price includes lot&gst. Price, features & plan are subject to change at any time. All plans/designs are the exclusive property of Douglas Homes Ltd.