

FERNIE 2

1201 Waterford Drive • Waterford, Chestermere



1369 sq ft



3 bedrooms



2.5 bathrooms

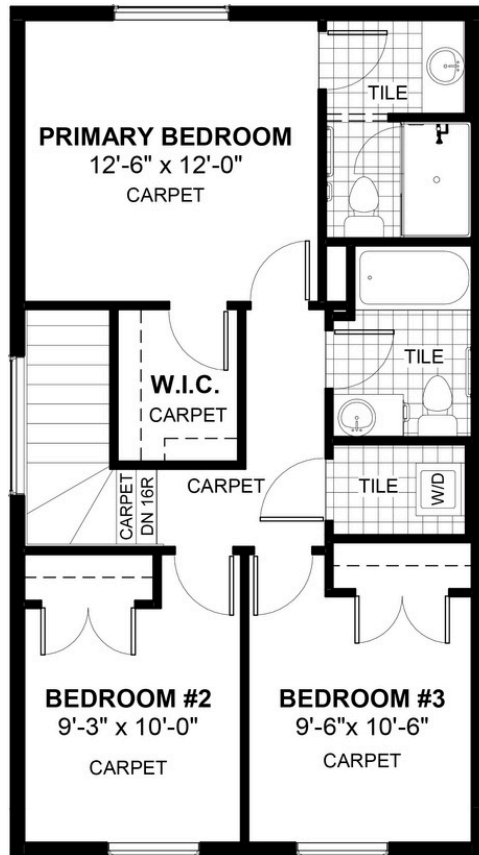
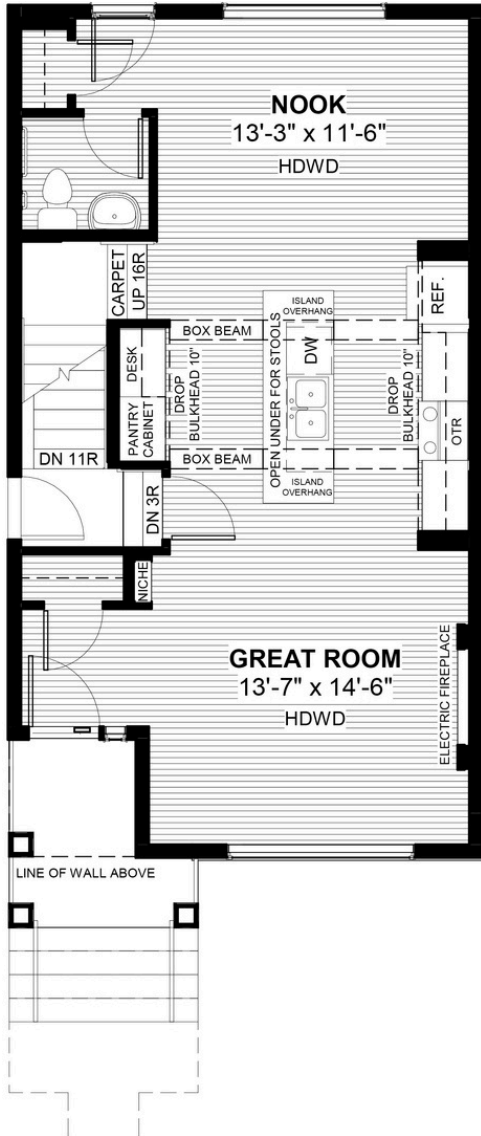


20'



FEATURES

- ✓ Basement Side Entry
- ✓ Rear Parking Pad
- ✓ 9' Main Floor Ceiling
- ✓ Quartz Countertops
- ✓ Electric Fireplace
- ✓ Eng. Hardwood Main Floors
- ✓ Upper Floor Laundry
- ✓ Walk-in Closet
- ✓ Tiles to Baths/Laundry



NOTES



*Price includes lot&gst. Price, features & plan are subject to change at any time. All plans/designs are the exclusive property of Douglas Homes Ltd.