

**QUICK
POSSESSION**

GLACIER

426 River Avenue, Cochrane

Derk Patton

 greystone@
douglashomes.net

 403.828.4599


1,180 sq. ft.



3 Bedrooms



2.5 Bathrooms



20'

FEATURES

9' -0" Basement

Basement Side Entry

Concrete Rear Parking Pad

9' Main Floor Ceiling

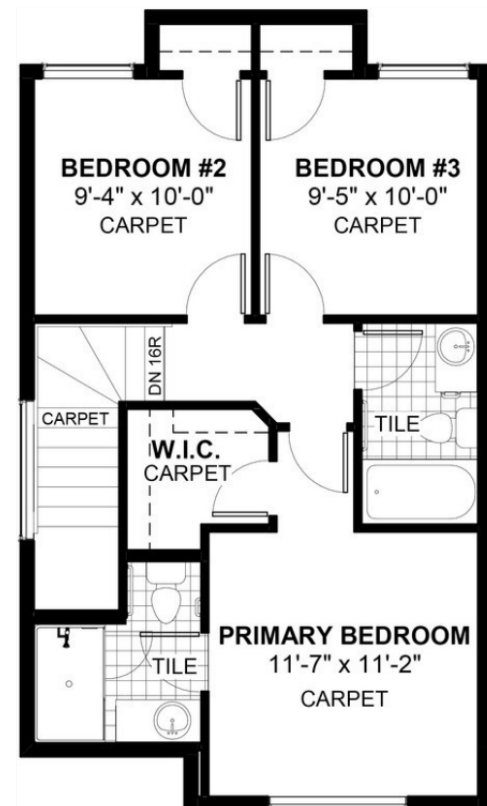
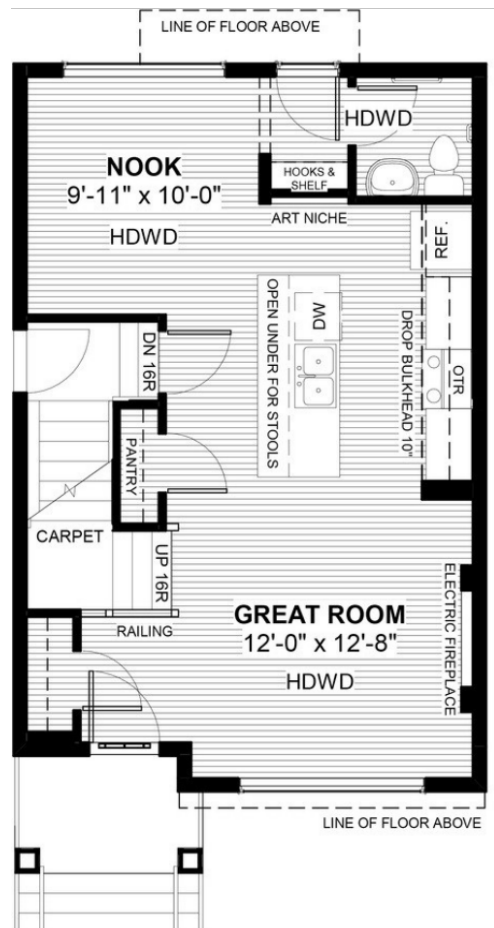
Quartz Countertops

Eng. Hardwood on Main Floor

Hook and Shelf to Rear

Walk-in Closet

Tiles to Bath and Laundry



Price includes lot & GST. Price, features & plan are subject to change at any time.
 All plans/designs are the exclusive property of Douglas Homes Ltd.

