

GLACIER

426 River Avenue • Greystone, Cochrane



1180 sq ft



3 bedrooms



2.5 bathrooms



20'

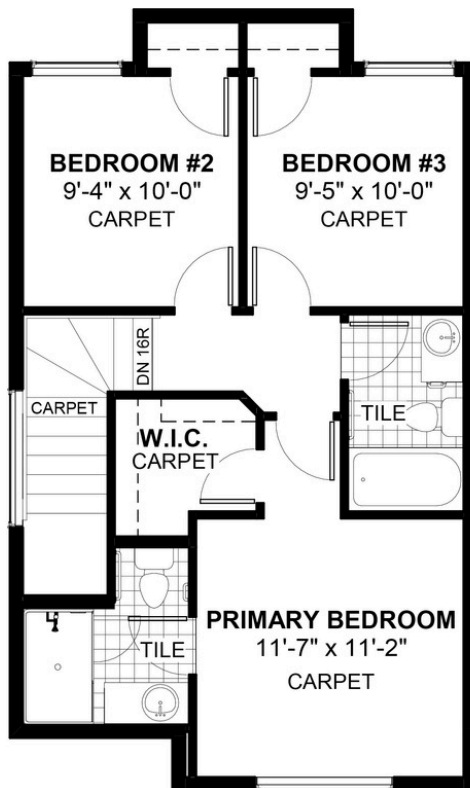
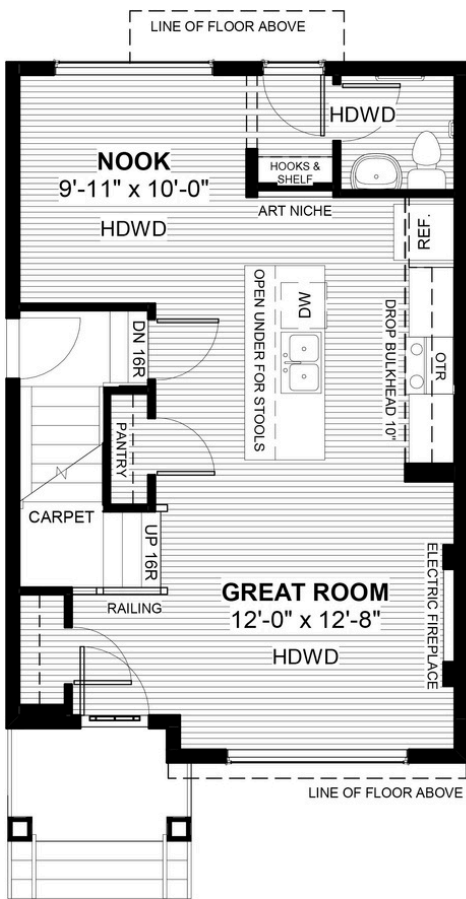


FEATURES

- ★ 9'-0" Basement
- ✓ Basement Side Entry
- ✓ Electric Fireplace
- ✓ Rear Parking Pad
- ✓ 9' Main Floor Ceiling
- ✓ Quartz Countertops
- ✓ Eng. Hardwood Main Floors
- ✓ Hooks and Shelf to Rear
- ✓ Walk-in Closet
- ✓ Tiles to bath and laundry



NOTES



*Price includes lot&gst. Price, features & plan are subject to change at any time. All plans/designs are the exclusive property of Douglas Homes Ltd.