

MELBOURNE

33 Southborough Lane • Southbow Landing, Cochrane



1287 sq ft



3 bedrooms



2.5 bathrooms



20'

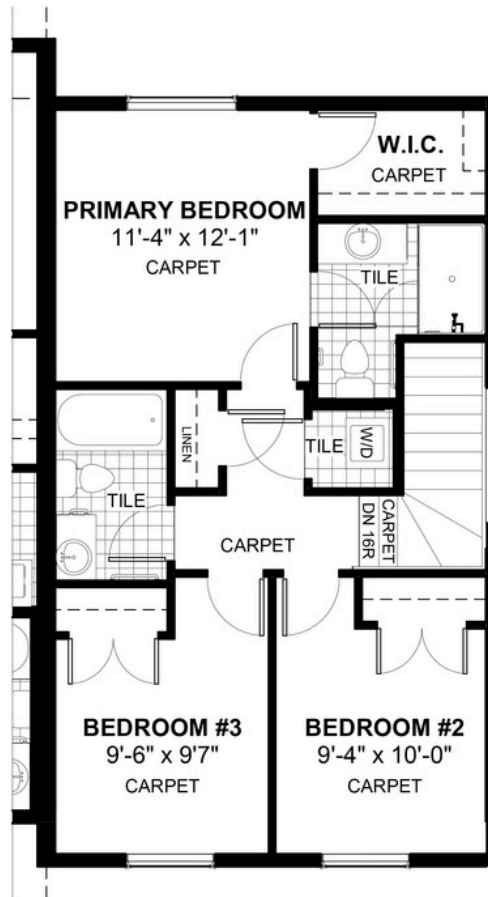
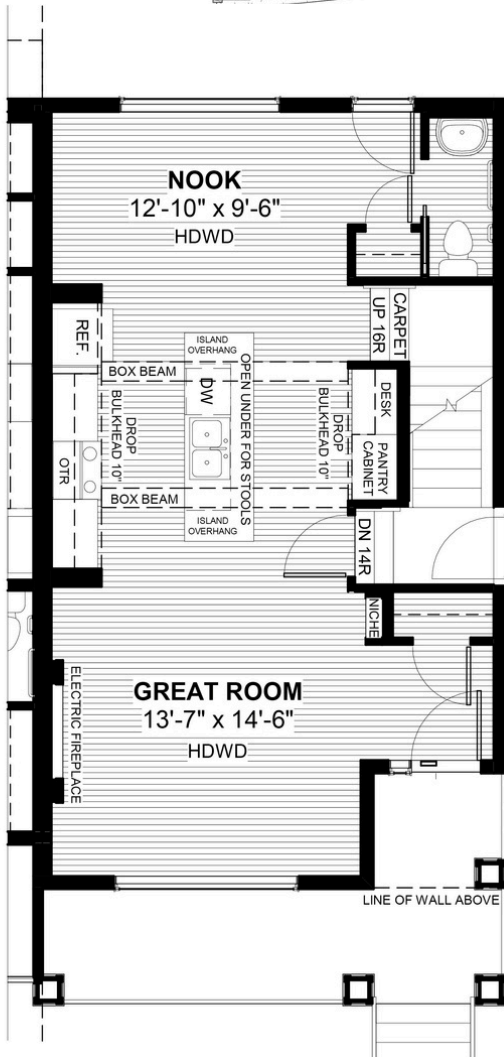


FEATURES

- ✓ Duplex (Right Unit)
- ✓ Rear Parking Pad
- ✓ Basement Side Entry
- ✓ Full Width Porch
- ✓ 9' Main Floor Ceiling
- ✓ Quartz Countertops
- ✓ Electric Fireplace
- ✓ Eng. Hardwood Main Floor
- ✓ Tiles to Bath and Laundry
- ✓ Walk-in Closet



NOTES



DOUGLAS HOMES
REMARKABLE WITHIN REACH

*Price includes lot&gst. Price, features & plan are subject to change at any time. All plans/designs are the exclusive property of Douglas Homes Ltd.

www.douglashomes.net | southbowlanding@douglashomes.net | 403-300-7806