

BOW

257 Waterford Way • Waterford, Chestermere



1600 sq ft



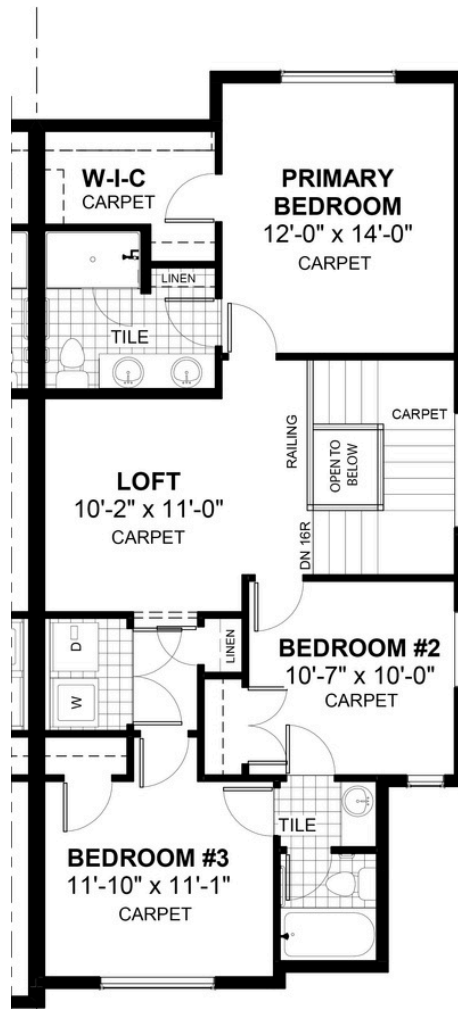
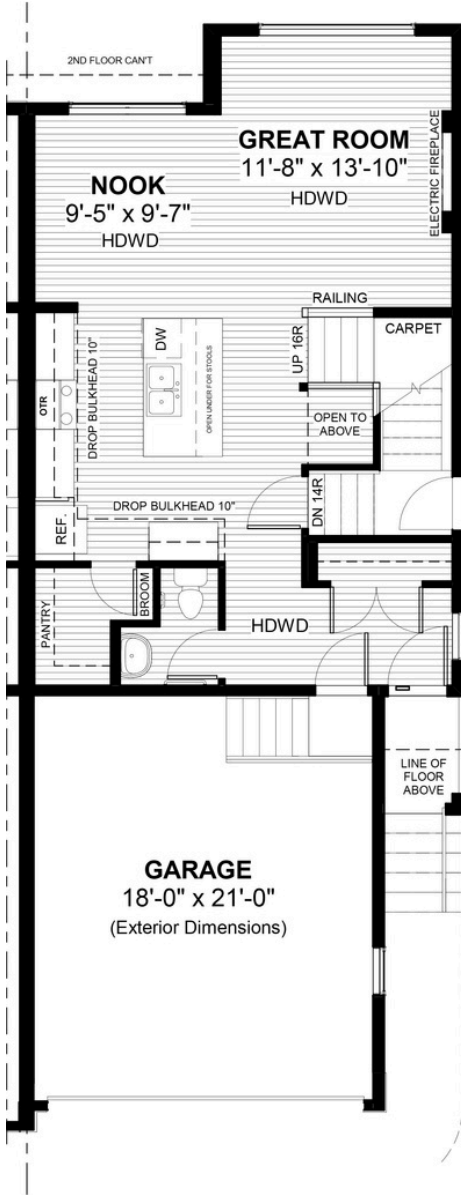
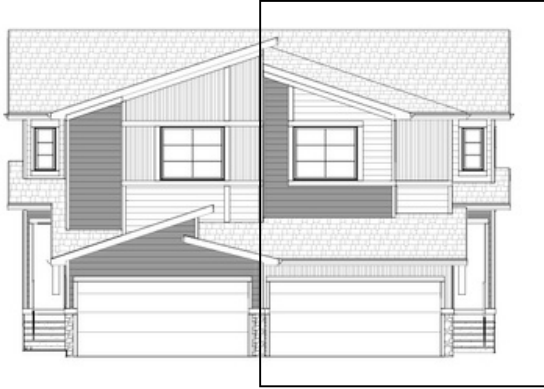
3 bedrooms



2.5 bathrooms



22'



FEATURES

- ✓ Duplex (Right Unit)
- ✓ Basement Side Entry
- ✓ 9' Main Floor Ceiling
- ✓ Quartz Countertops
- ✓ Eng. Hardwood Main Floors
- ✓ Upper Floor Laundry
- ✓ Double Sinks to Ensuite
- ✓ Upper Floor Loft
- ✓ Electric Fireplace
- ✓ Walk-in Pantry and Closet



NOTES



DOUGLAS HOMES

REMARKABLE WITHIN REACH

*Price includes lot&gst. Price, features & plan are subject to change at any time. All plans/designs are the exclusive property of Douglas Homes Ltd.