

GLENDALE

111 Sundown Crescent • Sunset Ridge, Cochrane



2224 sq ft



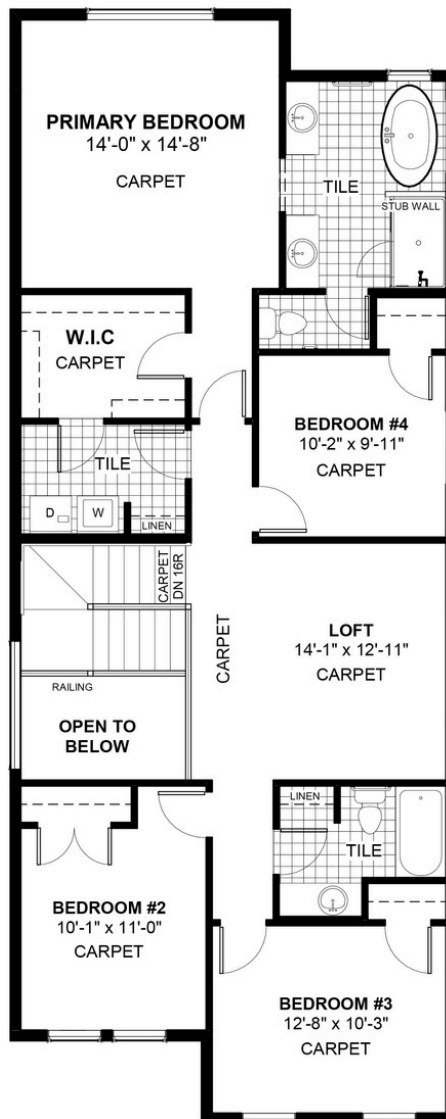
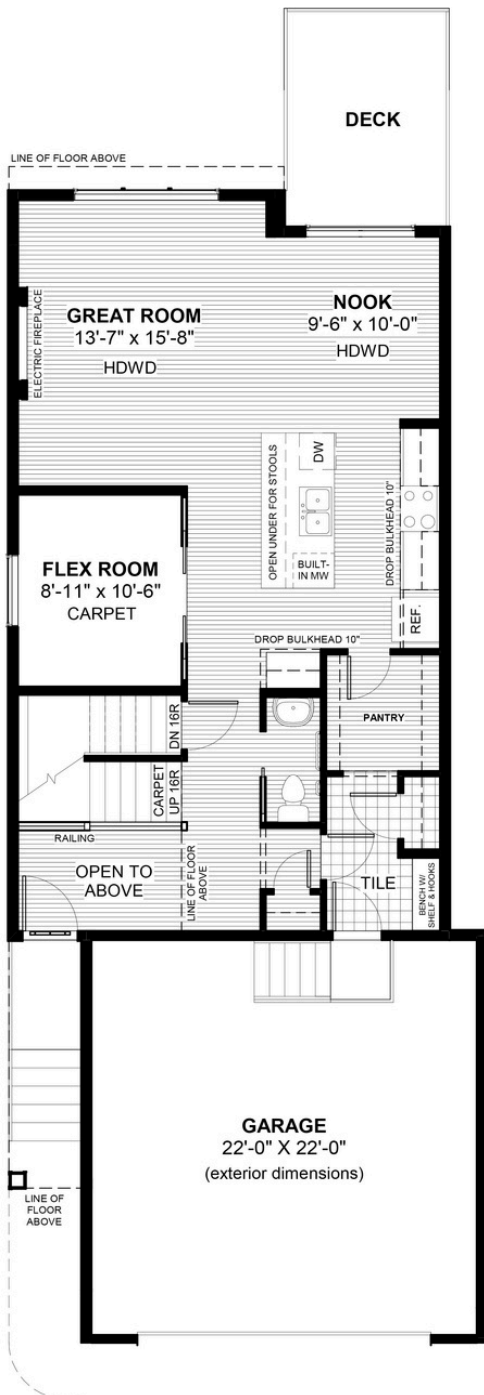
4 bedrooms



2.5 bathrooms



24'



FEATURES

- ✓ 9'-0" Walk-Out Basement
- ✓ Electric Fireplace
- ✓ Oversized 2 Car Garage
- ✓ Treated Wood Deck
- ✓ 9' Main Floor Ceiling
- ✓ Quartz Countertops
- ✓ Eng. Hardwood Main Floors
- ✓ Main Floor Flex Room
- ✓ Double Vanities to Ensuite
- ✓ Walk-in Closet
- ✓ Upper Floor Loft
- ✓ Walk Through Pantry



NOTES



*Price includes lot&gst. Price, features & plan are subject to change at any time. All plans/designs are the exclusive property of Douglas Homes Ltd.