

MOUNT RUNDLE

103 Sundown Crescent • Sunset Ridge, Cochrane



2034 sq ft



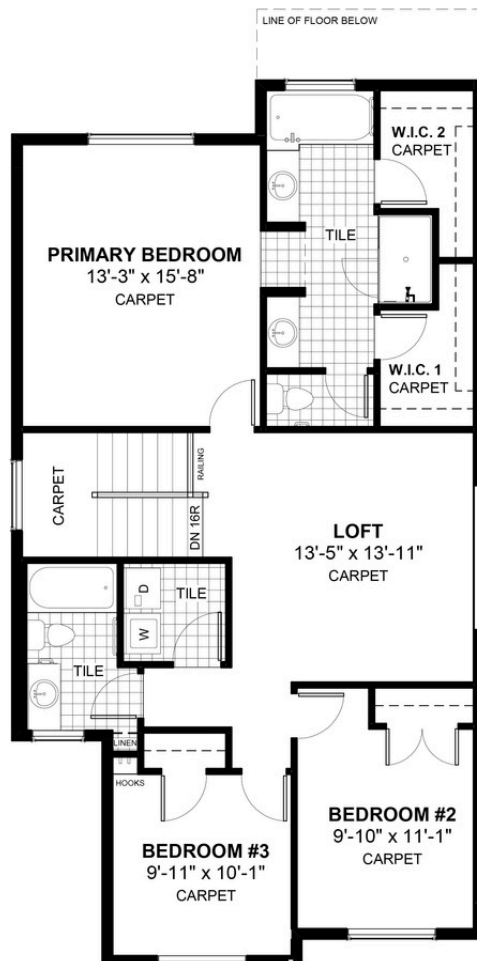
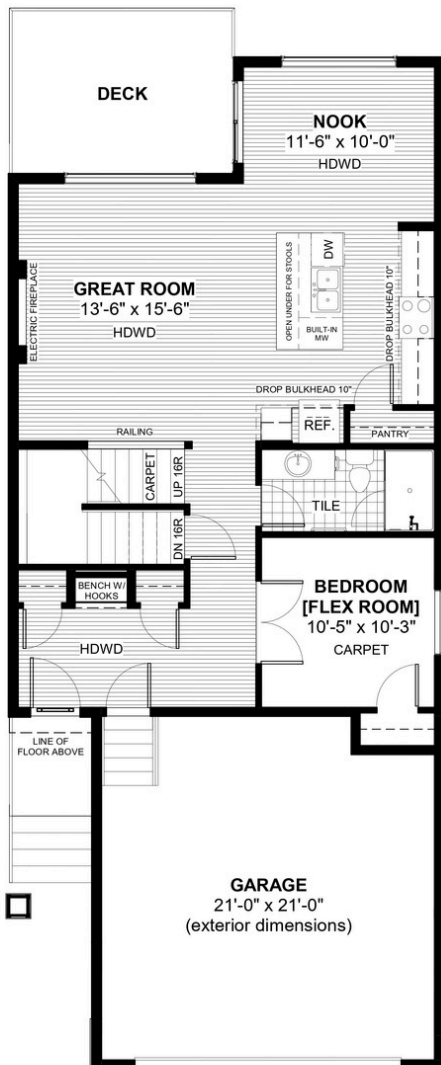
4 bedrooms



3 bathrooms



26'



FEATURES

- ✓ 9'-0" Walk-Out Basement
- ✓ 9' Main Floor Ceiling
- ✓ Quartz Countertops
- ✓ Electric Fireplace
- ✓ Treated Wood Deck
- ✓ Eng. Hardwood Main Floors
- ✓ Upper floor Loft
- ✓ Main Floor Bedroom
- ✓ Built-in Bench to Entrance
- ✓ Double Vanities to Ensuite
- ✓ Walk-in Closets



NOTES



*Price includes lot&gst. Price, features & plan are subject to change at any time. All plans/designs are the exclusive property of Douglas Homes Ltd.