

SILVERTON

107 Sundown Crescent • Sunset Ridge, Cochrane



2004 sq ft



3 bedrooms



2.5 bathrooms

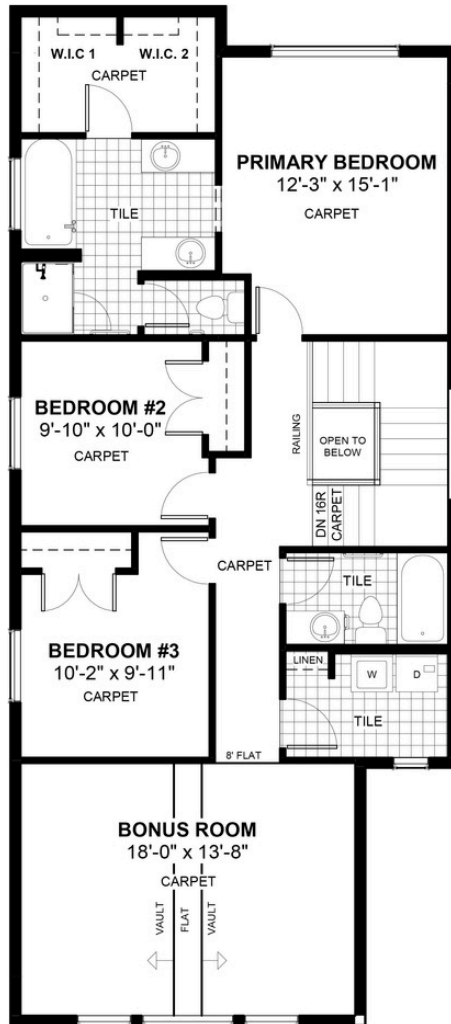


24'



FEATURES

- ✓ 9' Main Floor Ceiling
- ✓ 9'-0" Walk-Out Basement
- ✓ Quartz Countertops
- ✓ Electric Fireplace
- ✓ Oversized 2 Car Garage
- ✓ Eng. Hardwood Main Floors
- ✓ Upper Floor Bonus Room
- ✓ Built-in Bench to Entrance
- ✓ Double Vanities to Ensuite
- ✓ Walk-in Closet
- ✓ Walk through pantry



NOTES



*Price includes lot&gst. Price, features & plan are subject to change at any time. All plans/designs are the exclusive property of Douglas Homes Ltd.