

# ST. ANDREWS

345 Waterford Blvd • Waterford, Chestermere



1305 sq ft



3 bedrooms



2.5 bathrooms

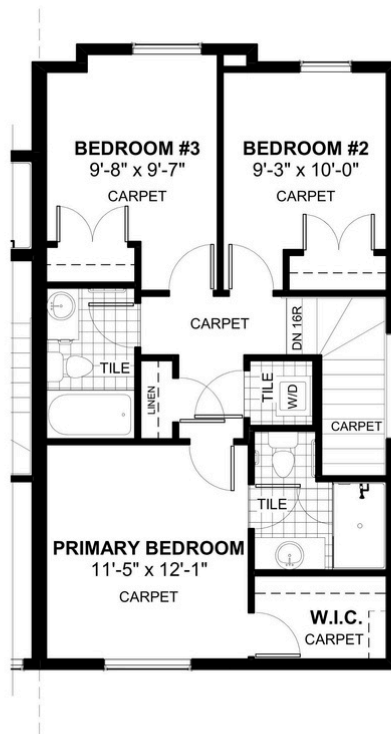
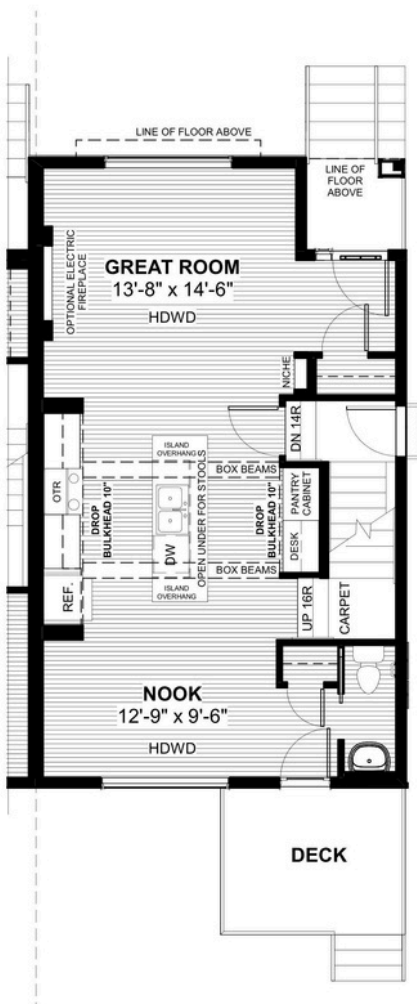


20'



## FEATURES

- ✓ Townhouse
- ✓ End Unit
- ✓ Basement Side Entry
- ✓ No Condo Fees
- ✓ Rear Garage
- ✓ 9' Main Floor Ceiling
- ✓ Treated Wood Deck
- ✓ Full Landscaping to Front/Back
- ✓ Quartz Countertops
- ✓ Eng. Hardwood Main Floor
- ✓ Upper Floor Laundry



\*Price includes lot&gst. Price, features & plan are subject to change at any time. All plans/designs are the exclusive property of Douglas Homes Ltd.