

QUICK POSSESSION Bow

264 Waterford Way
Waterford, Chestermere

Connie Buenaventura

✉ waterford@douglashomes.net

☎ 587.741.0641



1,613 sq ft



3 bedrooms



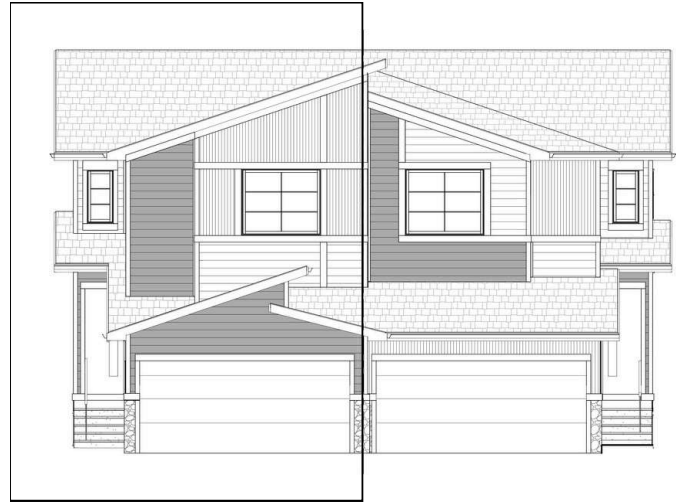
2.5 Bathrooms



22'

FEATURES

Duplex (Left Unit)
Basement Side Entry
Electric Fireplace
9' Main Floor Ceiling
Quartz Countertops
Eng. Hardwood Main Floors
Walk-In Pantry and Closet
Upper Floor Laundry
Double Sink to Ensuite
Upper Floor Loft



Price includes lot & GST. Price, features & plan are subject to change at any time.
All plans/designs are the exclusive property of Douglas Homes Ltd.

