

INVERNESS

400 Sora Blvd SE • Sora, Calgary



1361 sq ft



3 bedrooms



2.5 bathrooms

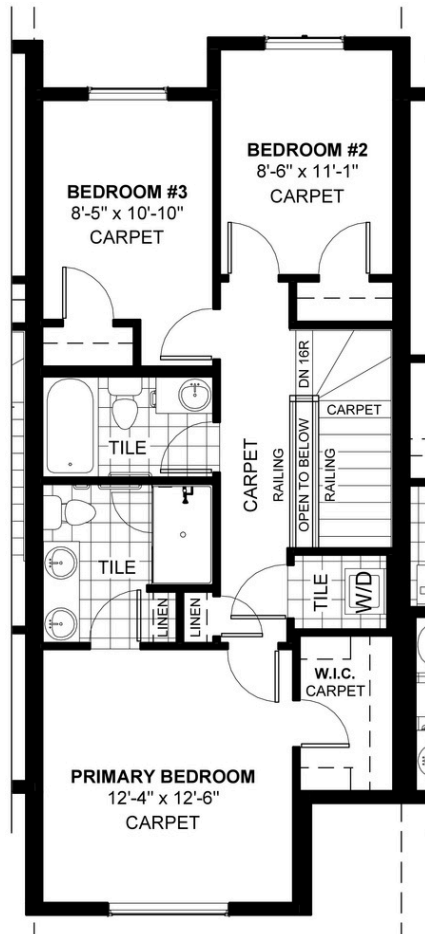
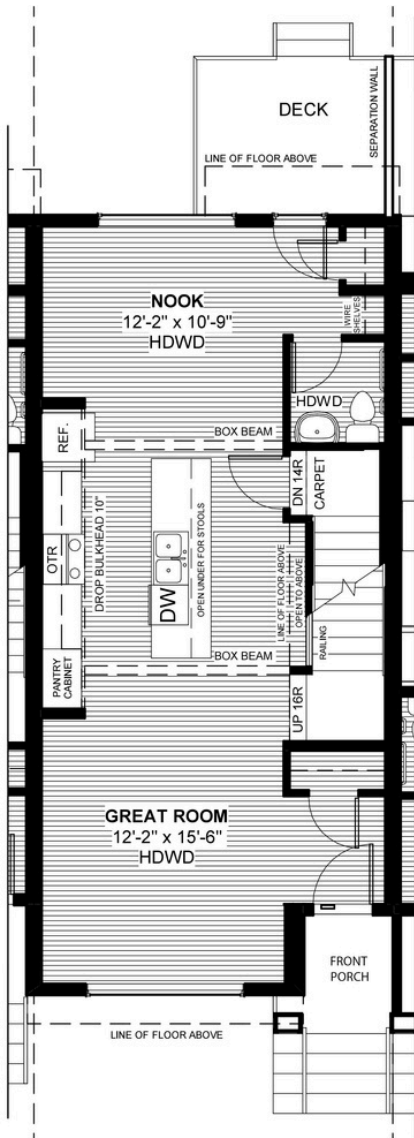


18'



FEATURES

- ✓ Townhouse
- ✓ No Condo Fees
- ✓ Detached Double Car Garage
- ✓ Full Landscaping to Front/Back
- ✓ 9' Main Floor Ceiling
- ✓ Rear Treated Wood Deck
- ✓ Quartz Countertops
- ✓ Eng. Hardwood Main Floor
- ✓ Upper Floor Laundry
- ✓ Walk-In Closet



DOUGLAS HOMES
REMARKABLE WITHIN REACH

*Price includes lot&gst. Price, features & plan are subject to change at any time. All plans/designs are the exclusive property of Douglas Homes Ltd.

www.douglashomes.net | sora@douglashomes.net | 403.818.9218