

WINSLOW

144 Crimson Ridge Place NW • Crimson Ridge, Calgary



2025 sq ft



4 bedrooms



3.5 bathrooms

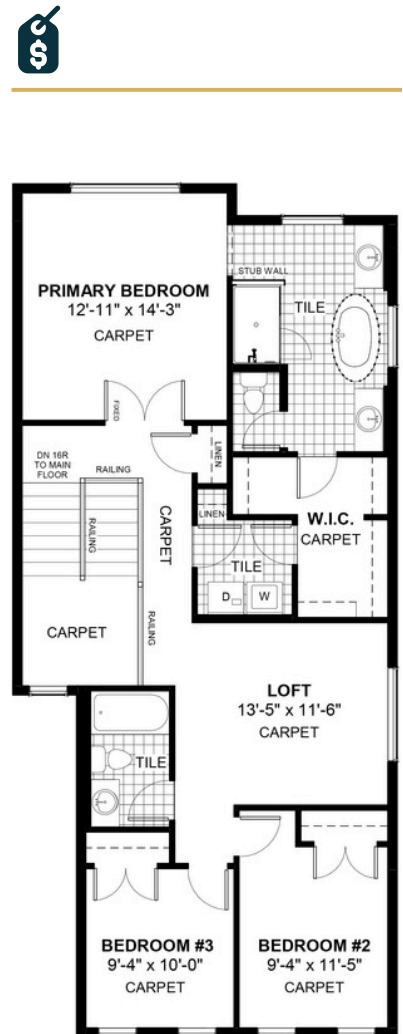
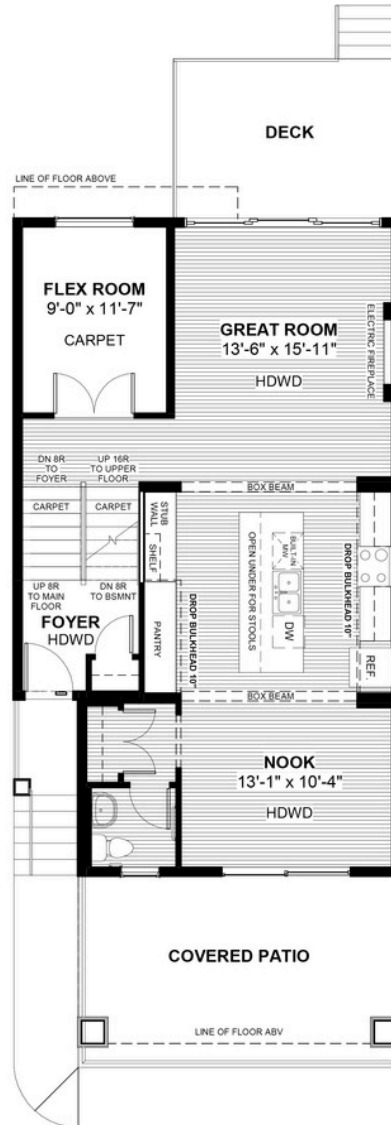
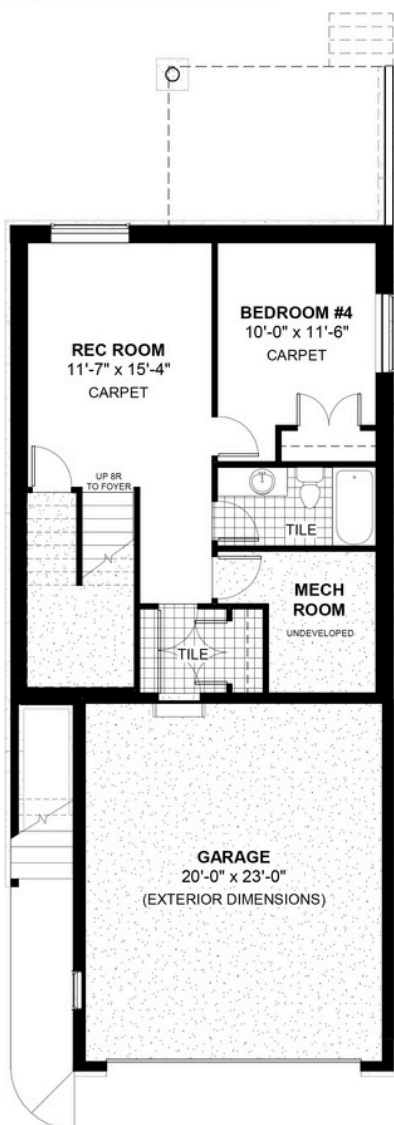


24'



FEATURES

- ★ 9' Reverse Walk-Out Basement
- ✓ Eng. Hardwood Main Floors
- ✓ 498 sqft Developed Basement
- ✓ Electric Fireplace
- ✓ Extended Garage Length
- ✓ Third Floor Loft
- ✓ Treated Wood Deck
- ✓ Main Floor Flex Room
- ✓ Covered Front Patio
- ✓ Double Vanities to Ensuite



*Price includes lot&gst. Price, features & plan are subject to change at any time. All plans/designs are the exclusive property of Douglas Homes Ltd.