

WINDERMERE

91 Southborough Crescent • Southbow Landing, Cochrane



1490 sq ft



3 bedrooms



2.5 bathrooms

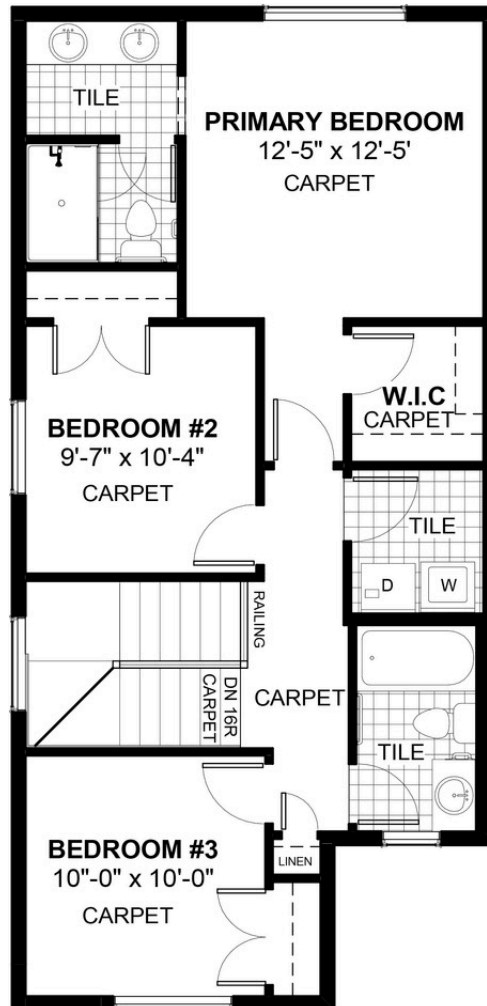
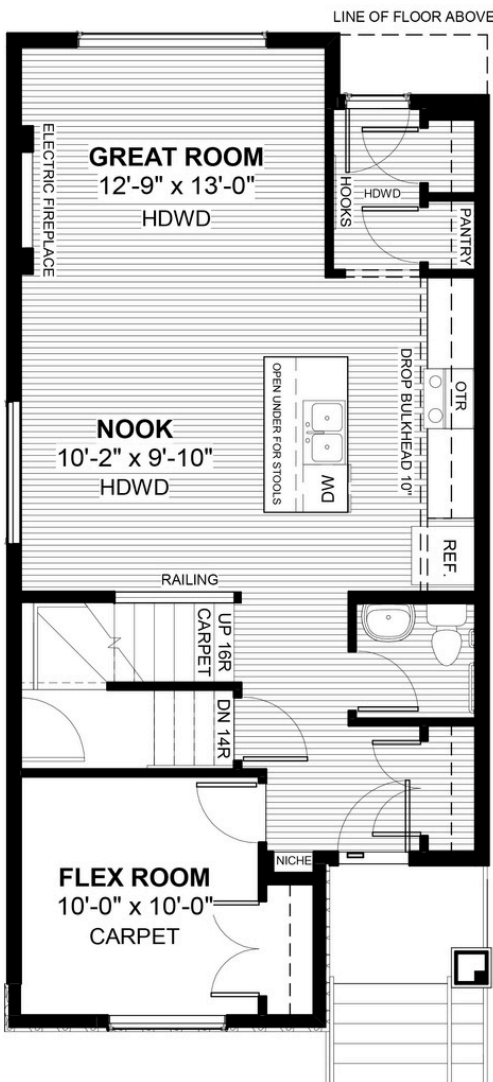


20'



FEATURES

- ✓ Basement Side Entry
- ✓ Rear Parking Pad
- ✓ Electric Fireplace
- ✓ 9' Main Floor Ceiling
- ✓ Quartz Countertops
- ✓ Eng. Hardwood Main Floor
- ✓ Main Floor Flex room
- ✓ Double Sinks to Ensuite
- ✓ Tiles to Bath and Laundry
- ✓ Walk-In Closet



NOTES



*Price includes lot&gst. Price, features & plan are subject to change at any time. All plans/designs are the exclusive property of Douglas Homes Ltd.