





ADELAIDE

632 Sora Boulevard SE • Sora, Calgary

 1362 sq ft
  3 bedrooms
  2.5 bathrooms
  18'

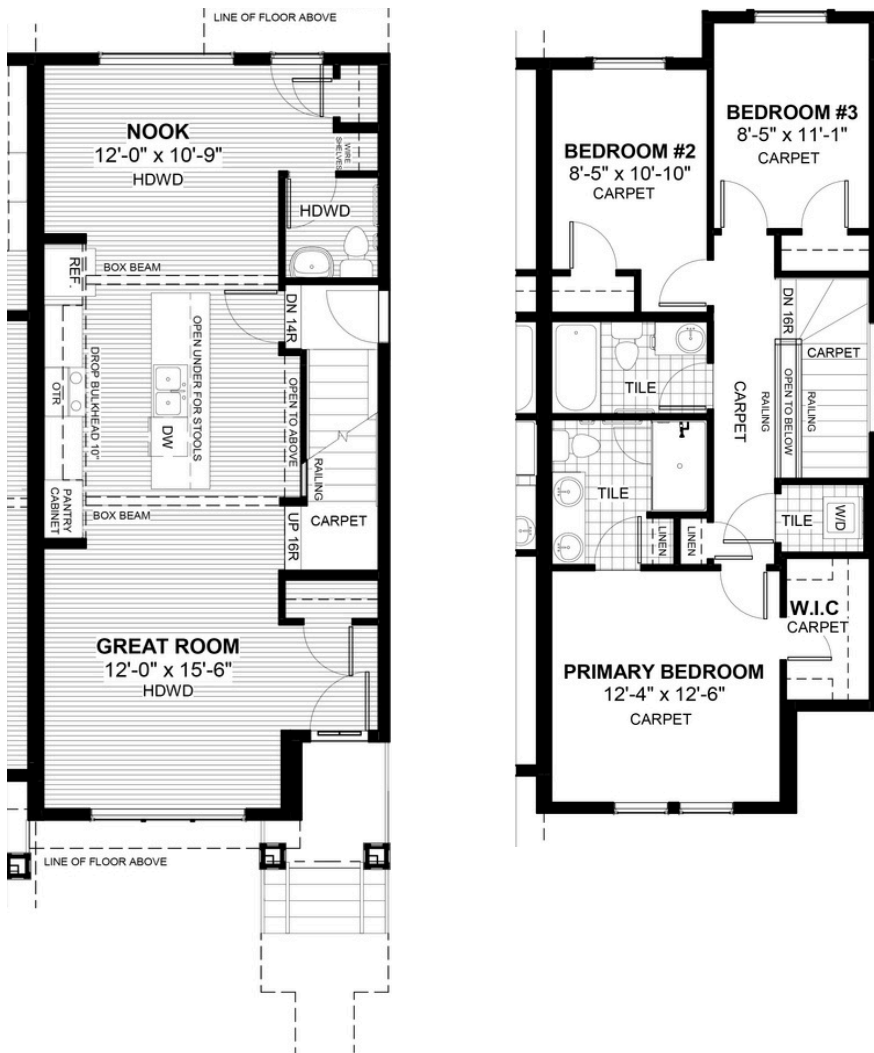


FEATURES

- ✓ Duplex (Right Unit)
- ✓ Basement Side Entry
- ✓ Rear Parking Pad
- ✓ 9' Main Floor Ceiling
- ✓ Quartz Countertops
- ✓ Eng. Hardwood Main Floors
- ✓ Large Kitchen Island
- ✓ Upper Floor Laundry
- ✓ Tile to Baths/Laundry
- ✓ Double Sinks to Ensuite



NOTES



DOUGLAS HOMES
REMARKABLE WITHIN REACH

*Price includes lot&gst. Price, features & plan are subject to change at any time. All plans/designs are the exclusive property of Douglas Homes Ltd.