

MONTENEGRO 4

155 Sundown Crescent • Sunset Ridge, Cochrane



2016 sq ft



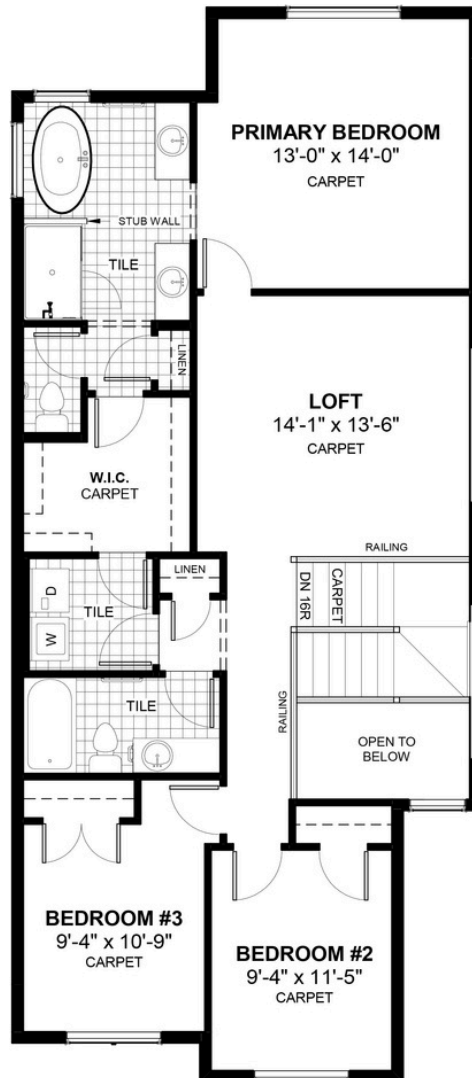
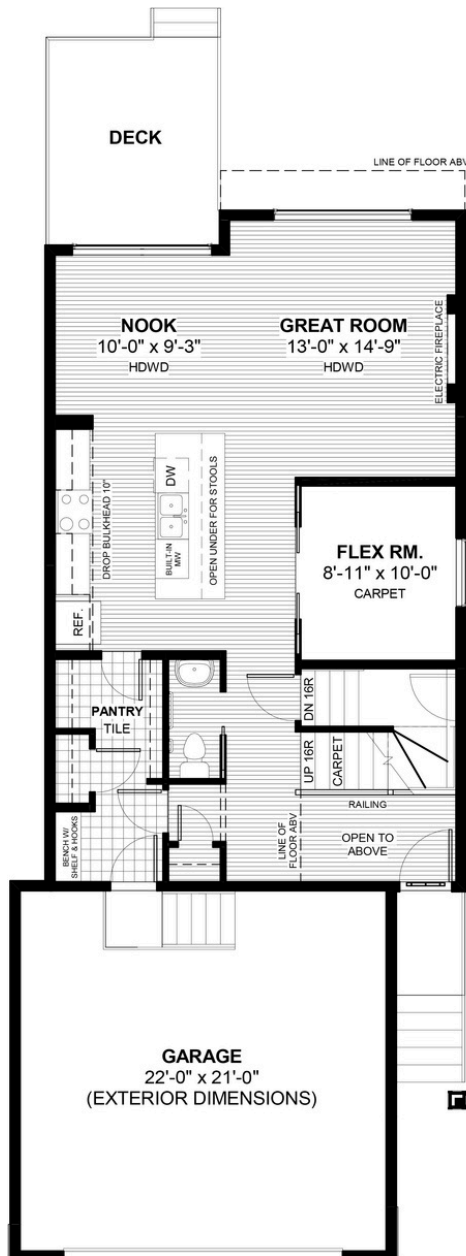
3 bedrooms



2.5 bathrooms



24'



FEATURES

- ✓ Basement Side Entry
- ✓ Oversized 2 Car Garage
- ✓ 9' Main Floor Ceiling
- ✓ Quartz Countertops
- ✓ Electric Fireplace
- ✓ Eng. Hardwood Main Floors
- ✓ Upper Floor Loft
- ✓ Built-in Bench to Mudroom
- ✓ Double Vanities to Ensuite
- ✓ Main Floor Flex Room



NOTES



DOUGLAS HOMES
REMARKABLE WITHIN REACH

*Price includes lot&gst. Price, features & plan are subject to change at any time. All plans/designs are the exclusive property of Douglas Homes Ltd.

www.douglashomes.net | sunsetridge@douglashomes.net | 403.604.2848