

**QUICK POSSESSION**

**MELBOURNE**

55 Agate Road, Cochrane

Derk Patton

✉ greystone@  
douglasshomes.net

☎ 403.300.7787

🏠 1,287 sq. ft.

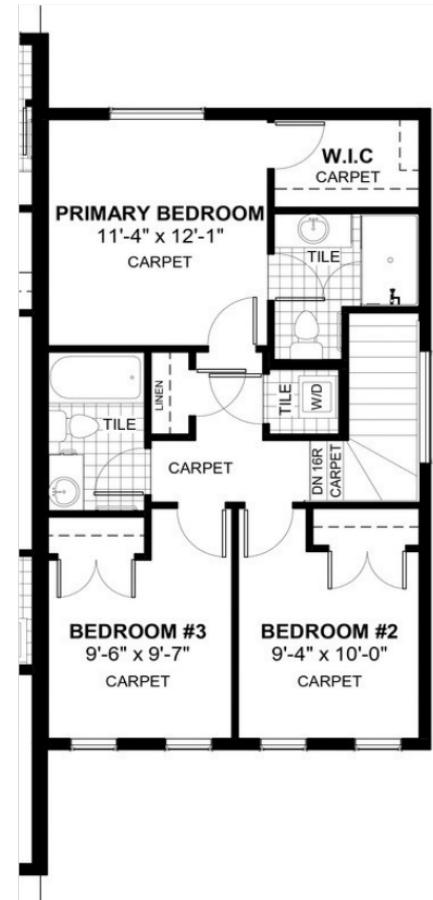
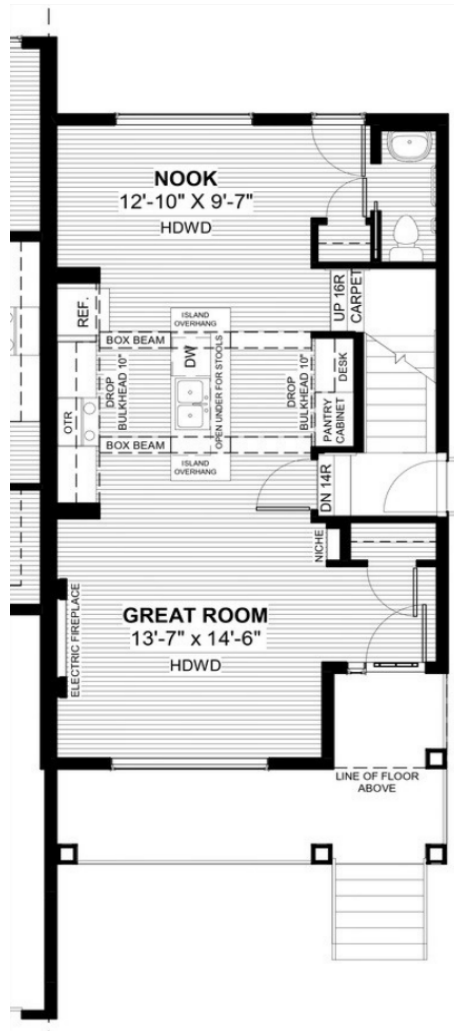
🛏 3 Bedrooms

🚿 2.5 Bathrooms

📏 20'

**FEATURES**

- Duplex (Right Unit)
- Basement Side Entry
- Electric Fireplace
- Rear Parking Pad
- 9' Main Floor Ceiling
- Quartz Countertops
- Eng. Hardwood on Main Floor
- Full Width Porch
- Built-In Desk
- Tiles to Bath/Laundry



Price includes lot & GST. Price, features & plan are subject to change at any time. All plans/designs are the exclusive property of Douglas Homes Ltd.

