

MELBOURNE

55 Agate Road • Greystone, Cochrane



1287 sq ft



3 bedrooms



2.5 bathrooms



20'

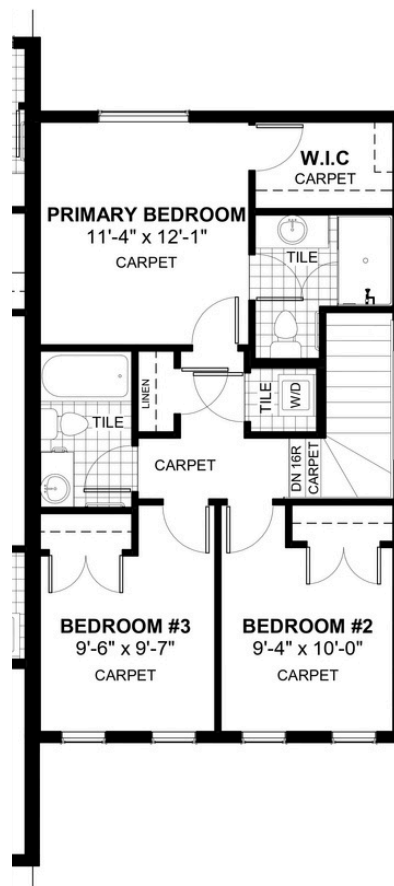
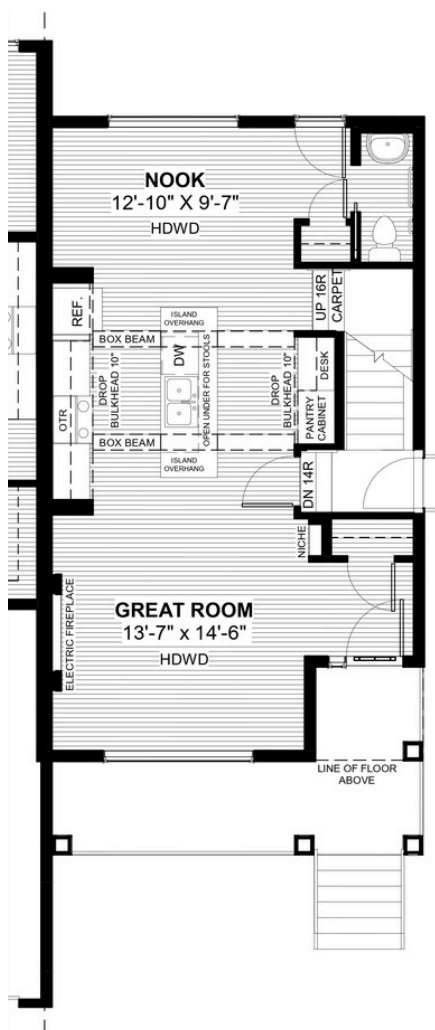


FEATURES

- ✓ Duplex (Right Unit)
- ✓ Basement Side Entry
- ✓ Electric Fireplace
- ✓ Rear Parking Pad
- ✓ 9' Main Floor Ceiling
- ✓ Quartz Countertops
- ✓ Eng. Hardwood Main Floors
- ✓ Full Width Porch
- ✓ Built-In Desk
- ✓ Tiles to Bath/Laundry



NOTES



DOUGLAS HOMES

REMARKABLE WITHIN REACH

*Price includes lot&gst. Price, features & plan are subject to change at any time. All plans/designs are the exclusive property of Douglas Homes Ltd.

www.douglashomes.net | greystone@douglashomes.net | 403.828.4599