

WINSLOW

152 Crimson Ridge Place NW • Crimson Ridge, Calgary



2025 sq ft



4 bedrooms



3.5 bathrooms

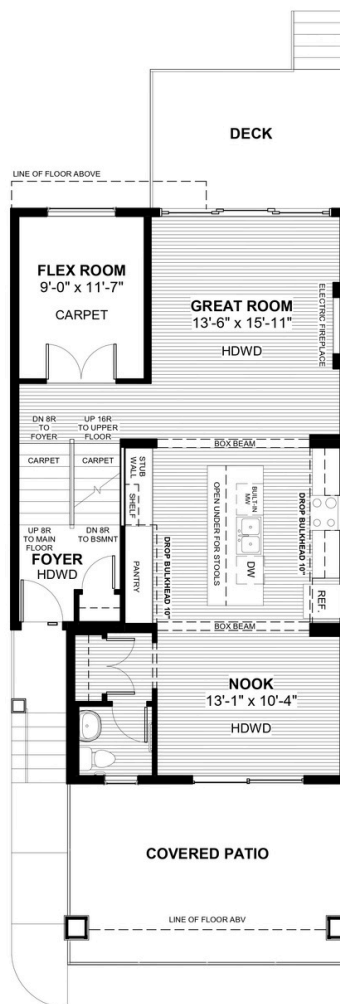
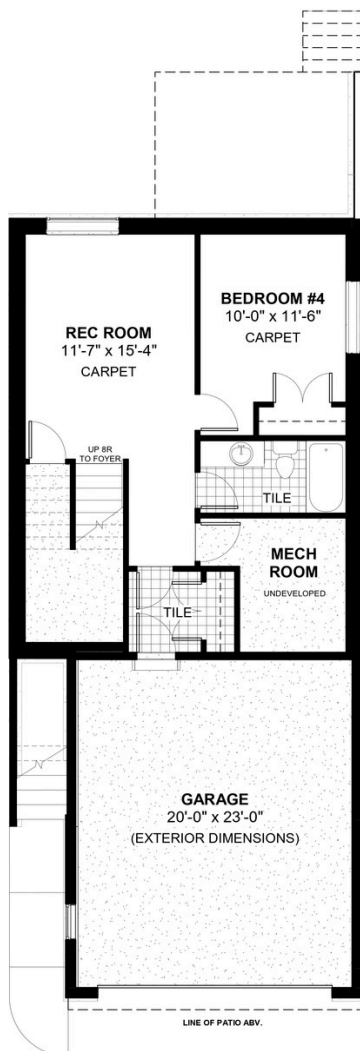


24'



FEATURES

- ★ **9' Reverse Walk-Out Basement**
- ✓ **494 sqft Developed Basement**
- ✓ **Extended Garage Length**
- ✓ **Treated Wood Deck**
- ✓ **Covered Front Patio**
- ✓ **Eng. Hardwood Main Floors**
- ✓ **Electric Fireplace**
- ✓ **Third Floor Loft**
- ✓ **Main Floor Flex Room**
- ✓ **Double Vanities to Ensuite**



DOUGLAS HOMES
REMARKABLE WITHIN REACH

*Price includes lot&gst. Price, features & plan are subject to change at any time. All plans/designs are the exclusive property of Douglas Homes Ltd.

www.douglashomes.net | crimsonridge@douglashomes.net | 587.355.2505