

# WINSLOW

152 Crimson Ridge Place NW • Crimson Ridge, Calgary



2025 sq ft



4 bedrooms



3.5 bathrooms

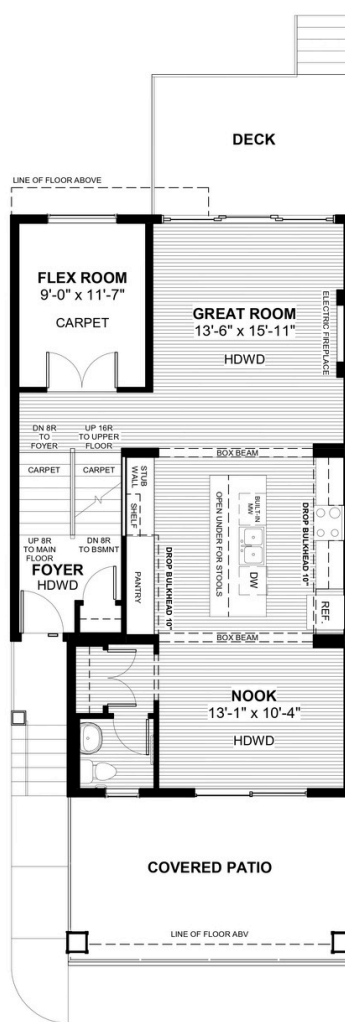
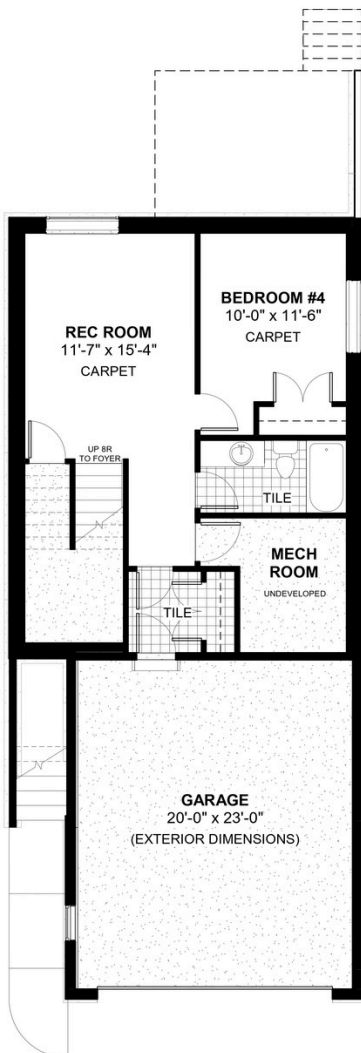


24'



## FEATURES

- ★ 9' Reverse Walk-Out Basement
- ✓ 494 sqft Developed Basement
- ✓ Extended Garage Length
- ✓ Treated Wood Deck
- ✓ Covered Front Patio
- ✓ Eng. Hardwood Main Floors
- ✓ Electric Fireplace
- ✓ Third Floor Loft
- ✓ Main Floor Flex Room
- ✓ Double Vanities to Ensuite



**DOUGLAS HOMES**  
REMARKABLE WITHIN REACH

\*Price includes lot&gst. Price, features & plan are subject to change at any time. All plans/designs are the exclusive property of Douglas Homes Ltd.

[www.douglashomes.net](http://www.douglashomes.net) | [crimsonridge@douglashomes.net](mailto:crimsonridge@douglashomes.net) | 587.355.2505