

EMERALD

200 Waterford Blvd • Waterford, Chestermere



1085 sq ft



1 bedroom



1.5 bathrooms

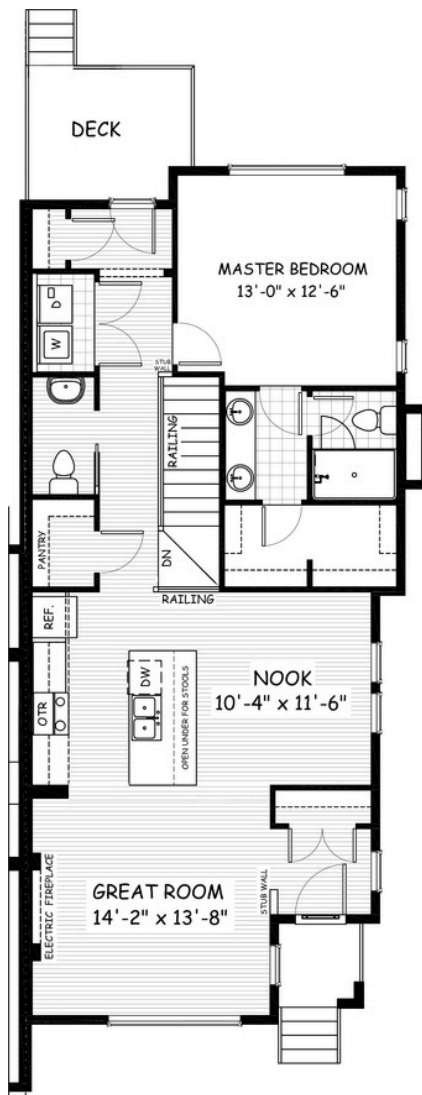


22'6"



FEATURES

- ✓ Bungalow (End Unit)
- ✓ No Condo Fees
- ✓ Detached Double Car Garage
- ✓ 10' Main Floor Ceiling
- ✓ Treated Wood Deck
- ✓ Landscaping & Fencing
- ✓ Quartz Countertops
- ✓ Eng. Hardwood Floor
- ✓ Powder Coated Iron Railings
- ✓ Electric Fireplace



DOUGLAS HOMES

REMARKABLE WITHIN REACH

*Price includes lot&gst. Price, features & plan are subject to change at any time. All plans/designs are the exclusive property of Douglas Homes Ltd.

www.douglashomes.net | waterford@douglashomes.net | 587.391.7812