

FERNIE 3

1189 Waterford Drive • Waterford, Chestermere



1514 sq ft



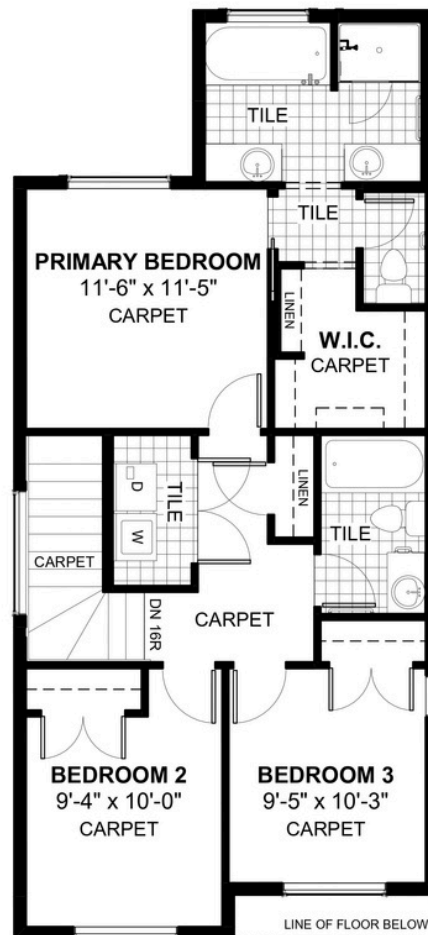
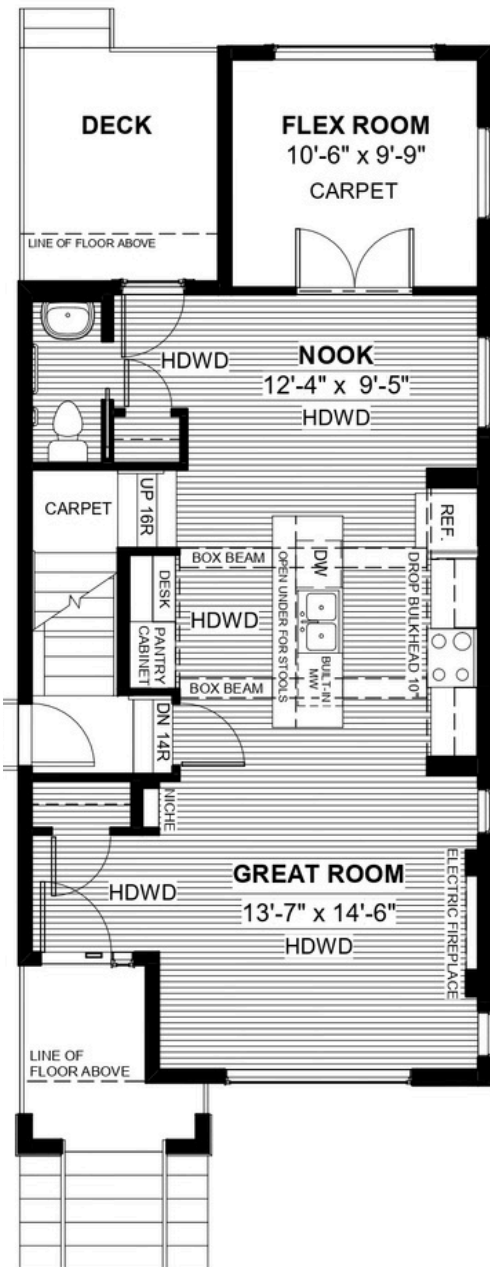
3 bedrooms



2.5 bathrooms



20'



FEATURES

- ★ Corner Lot
- ★ Rear Garage
- ✓ Basement Side Entry
- ✓ Main Floor Flex Room
- ✓ 9' Main Floor Ceiling
- ✓ Quartz Countertops
- ✓ Electric Fireplace
- ✓ Treated Wood Deck
- ✓ Double Vanities to Ensuite
- ✓ Upper Floor Laundry



NOTES



DOUGLAS HOMES
REMARKABLE WITHIN REACH

*Price includes lot&gst. Price, features & plan are subject to change at any time. All plans/designs are the exclusive property of Douglas Homes Ltd.

www.douglashomes.net | waterford@douglashomes.net | 587.391.7812